

THE COLLECTION

PROFESSIONAL DRESSING FOR THE WORKPLACE



**BUSINESSWEAR
HOSPITALITYWEAR
OUTERWEAR**

**CHEFSWEAR
BEAUTY & SALON
ACTIVE CARE WEAR**

CONTENTS

Welcome to Premier. The UK's leading name in quality uniforms for the Corporate, Hospitality, Healthcare and Beauty industries.

Our Sustainability Journey	4 - 5
Ethical & Environmental Policy	6
What's New in 2024	7
Outerwear	10 - 27
Shirts & Blouses	28 - 47
Ties & Scarves	48 - 52
Knitwear	53 - 59
Trousers, Chinos & Shorts	60 - 65
Polo Shirts	66 - 79
Casual Shirts & Tees	80 - 89
Waistcoats	90 - 91
Aprons & Tabards	92 - 133
Chefswear	134 - 153
Beauty & Salon	154 - 160
Healthcare	161
Onna by Premier	162 - 171
Size Guide	172 - 173
Index	174 - 175

Featured right
Models wear PR190 & PR191 'Swap & Pop' Customisable Apron Body and Straps, page 102, with PR219 & PR319 'Comis' Tees, page 82



OUR SUSTAINABILITY JOURNEY

Responsible Cotton Sourcing

Where we can, we source cotton that has been grown organically, using less water and without toxic pesticides.

Reusing Plastics

The recycled polyester in our garments comes from post-consumer raw material, like plastic bottles.

Better Packaging

We are reducing the amount of packaging for our products and use recycled solutions where we can.

Social Compliance

The people who make our garments work in factories that are audited to ensure ethical, social and environmental standards are maintained.

Memberships & Associations

We are a members of Better Cotton™ and also support Fairtrade® farmers by purchasing their cotton.



Community Engagement

It's important to us to give back, which is why we donate and sponsor charities that benefit the communities where our products are made.

Shared Values

We always strive to do better and encourage our supply chain to champion our social and environmental values.



For more information about our sustainability journey, visit our website, www.premeirworkwear.com/sustainability

Ethical and Environmental Policy

People, Production & The Planet

Ethical Production

Our manufacturing facilities and supply chains are audited by some of the world's leading organisations. This allows us to monitor and assess workplace standards by working closely with our suppliers to encourage continuous improvements.



Product Certification

Selected products carry certifications to back up our sustainability claims.



Initiatives & Associations

We are proud members of Better Cotton™ and we support Fairtrade® farmers by purchasing their cotton.



What's New For 2024?

Innovation and style are at the forefront in 2024. Our latest collections are designed to offer a pioneering range of colours, materials and styles. Sized to fit everybody with comfort and confidence. So, whether you're looking for cool chefswear, branded fleeces or signature shirts, you'll find them all in one book. And that includes Onna by Premier – our exclusive new range that will change the way you think about health and beauty uniforms. Discover more about the Onna collection on page 162.

Swap & Pop with colour

How can you create hundreds of different looks with one apron? Simple; we split it into two. With 20 shades of neckbands and waist ties, and 10 apron body colours, there are 200 different colour combinations to play with. That means there's no need to go bespoke to get your brand colours. Swap & Pop is the quick and simple way to kit your staff out in aprons that look custom made, but without the hefty price tag. Add branding and personalisation and the possibilities are endless. We wonder why we didn't think of it before!

Our recipe for success

Life in the kitchen is like a pressure cooker. Chefs told us they wanted 'cooler' garments in every sense of the word. So we've cooked up a stylish new range designed in lightweight, recycled fabrics that look and feel great to wear. Perfect for chefs who care as much about what goes into their uniform as they do about the provenance of the ingredients in their dishes.

The pocket you've been waiting for

Love our PR151 waist aprons but can't live without the pockets in the PR158? We've added a pocket into our classic apron shape to give you a brand new PR141 Pocket Waist Apron. A bright idea that's available in recycled polyester and six of your favourite shades from the 'Colours Collection'.

Crafted for artisans

Our PR181 'Artisan's Choice' apron is tailored with soft lines, rounded edges and finer straps with metal eyelets and a double pocket. A beautiful apron cut from strong canvas that you can style your way - as a full bib or folded down to a neat half apron.

Recyclight® microfleece

We've also introduced an exciting new range of Recyclight® full and ¼ zipped microfleece. Warm and lightweight, the 100% recycled polyester fabric is anti-pill and incredibly soft, making it ideal for the widest range of applications. Just add an embroidered logo for the perfect finishing touch.





SAY HELLO TO ACTIVE CARE WEAR

Onna is Active Care Wear - designed specifically for on-the-go professionals. We've engineered technical fabrics with 4-way stretch to let you flex; breathable fibres to keep you cool and easy-care fabrics to keep you looking good. We've also included all the key features you need for ultimate practicality. Basically, we've put in the work, so you don't have to!



NEW RANGE
See page 162

OUTERWEAR

CORPORATE LOOKS

If you're in and out of the cold, you need warm layers for all weathers. Our latest outerwear collection has got you covered with softshell jackets and gilets, fleeces and padded jackets that layer perfectly with our other workwear and hospitality ranges – including those with Artisan trims. Smart details like hidden zips make decoration easy for a truly professional finish. So, you can style a complete top-to-toe solution, for men or women, in branded and co-ordinated colourways.

Models wear PR810 and PR812 Windchecker®
Printable & Recycled Softshell Jackets, see page 12



Windchecker® Printable & Recycled Softshell Outerwear

Brandable
40° Wash

Windchecker® Printable & Recycled Softshell Jacket ■ Two layer zip through jacket with chin guard, Zipped side pockets, Hook 'n' loop strip to the cuffs, Elastic drawcord to the hem, Bonded fleece inner layer ■ 100% Recycled Polyester, 280gsm, 3 colours.

PR810 Men's sizes: S/35" – 4XL/53" **PR812** Women's sizes: XS/8 – 2XL/18

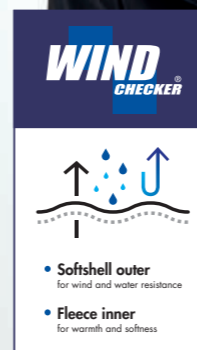
Windchecker® Printable & Recycled Gilet ■ Two layer zip through gilet with chin guard, Zipped side pockets, Elastic drawcord to the hem, Bonded fleece inner layer ■ 100% Recycled Polyester, 280gsm, 3 colours.

PR814 Men's sizes: S/35" – 4XL/53" **PR816** Women's sizes: XS/8 – 2XL/18



Printability
Perfect base for all types of print applications

Recycled fabric
Polyester made from post-consumer plastics





PR808

PR809



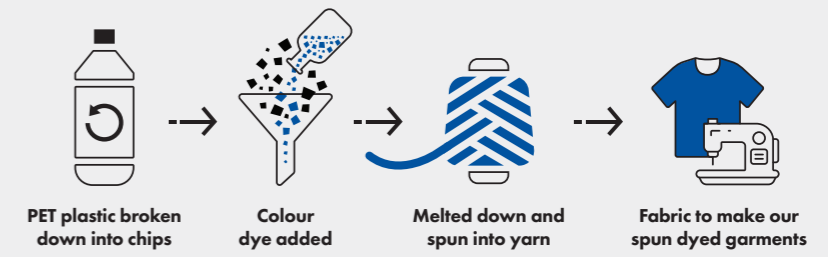
Spun Dyed Recycled Zip-Through Sweat

Spun dyeing uses 66% less water, 75% fewer chemicals and 60% less CO₂ compared to traditional dyeing methods.

Spun Dyed Recycled Zip-Through Sweat ■ Made with spun dyed recycled polyester yarn, Contrast zip detail, Two external zipped pockets, High neck cadet collar ■ 100% Recycled Polyester, 280gsm, 3 colours.

PR808 Men's sizes: S/35" - 4XL/53"

PR809 Women's sizes: XS/8 - 2XL/18



40° Wash Brandable



'Recyclight'® Padded Jacket

'Recyclight'® Padded Jacket ■ Zip-through padded jacket with horizontal baffle detail, Two zipped side pockets, Warm, lightweight and water-resistant, Zip access in the lining for embroidery applications, Comes with a handy stuff sack ■

Outer: 100% Recycled Nylon, Inner: 100% Recycled Polyester, 38gsm, 2 colours.

PR817 Men's sizes: S/35" – 4XL/53"

PR819 Women's sizes: XS/8 – 2XL/18



■ Made from 100% recycled nylon and polyester

■ Two zipped side pockets



■ Open pocket to the inner lining



40° Wash

Brandable

Comes with a handy stuff sack





▪ Cadet collar



▪ Two zipped side pockets

'Recyclight'[®] Padded Gilet

'Recyclight'[®] Padded Gilet ▪ Zip-through padded gilet with horizontal baffle detail, Two zipped side pockets, Warm, lightweight and water-resistant, Zip access in the lining for embroidery applications, Comes with a handy stuff sack ▪ Outer: 100% Recycled Nylon, Inner: 100% Recycled Polyester, 38gsm, 2 colours.

- PR811** Men's sizes: S/35" – 4XL/53"
- PR815** Women's sizes: XS/8 – 2XL/18



▪ Warm, lightweight and water-resistant



Comes with a handy stuff sack

- 40° Wash
- Brandable



'Artisan' Fleece Jacket

'Artisan' Fleece Jacket ■ Contrast trim detail, Zip through style with two-way zipper, External zipped side pockets, Front and back panels ■ 100% Polyester, 260gsm, 5 colours.

PR823 Men's sizes: S/34" – 3XL/54" ■ **PR824** Women's sizes: XS/8 – 3XL/20



40° Wash Brandable



'Artisan' Fleece Gilet

Brandable

40° Wash

'Artisan' Fleece Gilet ■ Contrast trim detail, Zip through style with two-way zipper, External zipped side pockets, Front and back panels ■ 100% Polyester, 260gsm, 5 colours.

PR803 Men's sizes: **S/34" – 3XL/54"**

PR804 Women's sizes: **XS/8 – 3XL/20**



Styled with PR252 & PR352 'Maxton' Shirt, page 44



'Recyclight'® Full Zip Micro Fleece

'Recyclight'® Full Zip Micro Fleece ■ Long sleeve zip-through microfleece, Anti-pill fleece fabric, Cadet collar, Storm flap and chin guard, Side pockets ■ 100% Recycled Polyester, 200gsm, 3 colours

PR830 Men's sizes: S/35" – 4XL/53"

PR832 Women's sizes: XS/8 – 3XL/20



■ Side seamed pockets



■ Cadet collar



■ Anti-pill fleece fabric

40° Wash

Brandable



NEW



NEW

PR831



Unisex 'Recyclight'[®] ¼ Zip Micro Fleece

Unisex 'Recyclight'[®] ¼ Zip Micro Fleece ■ Quarter-zip through microfleece, Anti-pill fleece fabric, Cadet collar, Storm flap and chin guard, Side pockets ■ 100% Recycled Polyester, 165gsm, 3 colours



PR831 Unisex sizes: XS/33" - 4XL/53"



40° Wash Brandable

SHIRTS & BLOUSES

THE SHIRT EDIT

From best-selling poplins in an incredible range of colours and sizes, to cotton-rich Oxfords and casual checks, our shirts are designed to suit every corporate look. An unrivalled choice of fits ranging from tailored cuts with formal styling to laid back options that maximise comfort. All cut from premium quality fabrics that are so easy to care for, they take the hard work out of work wear.



22
COLOURS

Easy Care Poplin Shirts



Long Sleeve Poplin Shirt ■ 65% Polyester, 35% Cotton, 105gsm, 22 colours

PR200 Men's: Formal collar styling, Left chest open Mitred pocket, Double button fastening on the cuff ■ Sizes: **14.5"/37cm – 23"/56cm***

PR300 Women's: Soft collar styling, Rounded bottom hem, Styled with bust and back darts ■ White: 115gsm ■ Sizes: **6/2XS – 30/8XL***

Short Sleeve Poplin Shirt ■ 65% Polyester, 35% Cotton, 105gsm, 22 colours

PR202 Men's: Formal collar styling, Left chest open Mitred pocket, Self coloured buttons ■ Sizes: **14.5"/37cm – 23"/56cm***

PR302 Women's: Soft collar styling, Rounded bottom hem, Styled with bust and back darts ■ White: 115gsm ■ Sizes: **6/2XS – 30/8XL***

*Men's sizes 20"/50cm, 21"/52cm, 22"/54cm and 23"/56cm only available in selected colours

*Women's sizes 28/7XL and 30/8XL only available in selected colours

40° Wash Easy Care Tailored Fit Brandable



'Grandad' Shirt

Banded Collar 'Grandad' Long Sleeve Shirt ■ 65% Polyester, 35% Cotton, 115gsm ■ 2 colours

PR258 Men's: Banded collar, Top button fastening, Double button cuff ■ Sizes: **XS/30" – 3XL/54"**

PR358 Women's: Banded collar, Top button fastening, Bust and back darts ■ Sizes: **XS/8 – 2XL/18**

Brandable
40° Wash
Modern Fit



NEW COLOUR



PR358

NEW COLOUR

PR258



PR204

PR305

PR305 Women's ¾ Sleeve Blouse ■ Soft collar styling, Three-quarter sleeves, Styled with bust and back darts ■ 65% Polyester, 35% Cotton, 105gsm/115gsm White ■ Sizes: **6/2XS - 26/6XL** (Size 6/2XS in Black & White only) ■ 5 colours



40° Wash Tailored Fit Brandable



PR204 Men's Long Sleeve Slim-Fit Poplin Shirt ■ Formal collar styling, Double button fastening on the cuff, Fitted style ■ 65% Polyester, 35% Cotton, 105gsm ■ Sizes: **14.5"/37cm - 17.5"/44.5cm** ■ 2 colours



40° Wash
Slim Fit
Brandable



Stretch-Fit Poplin

Stretch-Fit Cotton Poplin Short Sleeve Shirt ■ 97% Cotton, 3% Elastane, 115gsm, 4 colours

PR246 Men's: Seamless placket, Cut-away collar, Soft and stretchy fabric ■ Sizes: **XS/30"** – **4XL/58"**

PR346 Women's: Seamless placket, Styled with bust and back darts, Soft and stretchy fabric ■ Sizes: **XS/8** – **3XL/20**

Brandable



Stretch-Fit Cotton Poplin Long Sleeve Shirt ■ 97% Cotton, 3% Elastane, 115gsm, 4 colours

PR244 Men's: Seamless placket, Cut-away collar, Two button adjustable cuff ■ Sizes: **XS/30"** – **4XL/58"**

PR344 Women's: Seamless placket, Styled with bust and back darts, Two button adjustable cuff ■ Sizes: **XS/8** – **3XL/20**

40° Wash Modern Fit Cotton Rich Brandable



Supreme Poplin

Superior fabric and fit

Short Sleeve Supreme Poplin Shirt ■ 65% Polyester, 35% Cotton, 125gsm, 3 colours

PR209 Men's: Offering a heavier fabric construction, Formal collar styling, Two button fastening on the collar stand ■ Sizes: **14.5"** / 37cm – **19"** / 48cm

PR309 Women's: Offering a heavier fabric construction, Styled with bust and back darts, Two button fastening on the collar stand ■ Sizes: **8/XS** – **26/6XL**

Long Sleeve Supreme Poplin Shirt ■ 65% Polyester, 35% Cotton, 125gsm, 3 colours

PR207 Men's: Offering a heavier fabric construction, Formal collar styling, Two button fastening on the cuff ■ Sizes: **14.5"** / 37cm – **19"** / 48cm

PR307 Women's: Offering a heavier fabric construction, Styled with bust and back darts, Two button fastening on the cuff ■ Sizes: **8/XS** – **26/6XL**



40° Wash Modern Fit Easy Care Brandable



**SUPREME
POPLIN**



Security Shirts

Long Sleeve Security Shirt ▪ Formal collar styling, Two Mitred button down chest pockets, Tabs for application of Epaulettes on the shoulders ▪ 65% Polyester, 35% Cotton

PR210 Men's: 105gsm, 3 colours ▪ Sizes: 14.5"/37cm – 19"/48cm

PR310 Women's: 115gsm, *White ▪ Sizes: 8/XS – 26/6XL

40° Wash

Classic Fit

Brandable

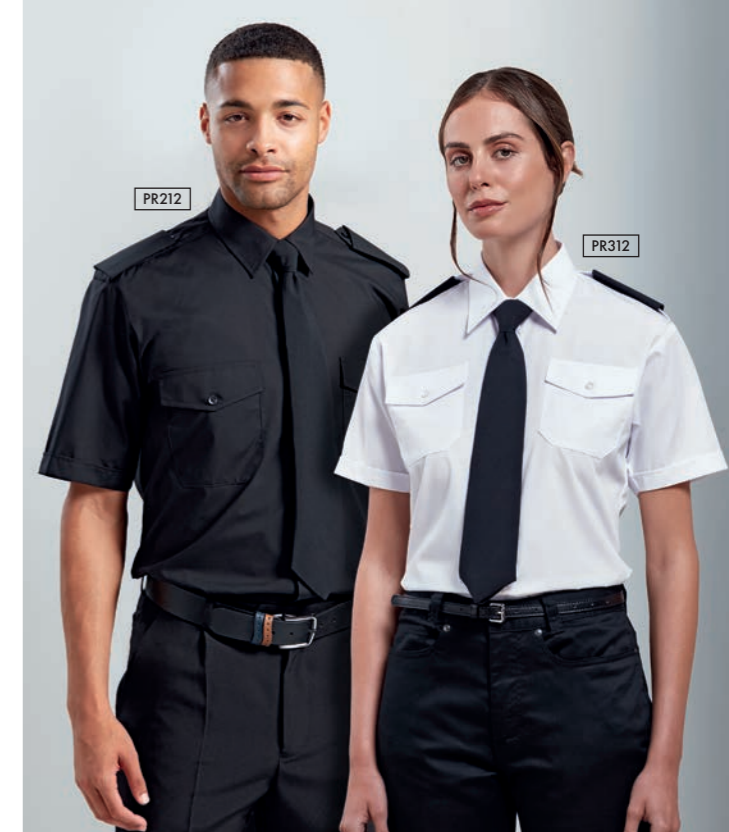
Short Sleeve Security Shirt ▪ Formal collar styling, Two Mitred button down chest pockets, Tabs for application of Epaulettes on the shoulders ▪ 65% Polyester, 35% Cotton

PR212 Men's: 105gsm, 3 colours

▪ Sizes: 14.5"/37cm – 19"/48cm

PR312 Women's: 115gsm, *White

▪ Sizes: 8/XS – 26/6XL



Security Accessories

PR715 Epaulettes ▪ Adjustable tear release fastening, Embroidery area 9cm x 5cm ▪ 100% Polyester ▪ Wipe clean only ▪ 2 colours

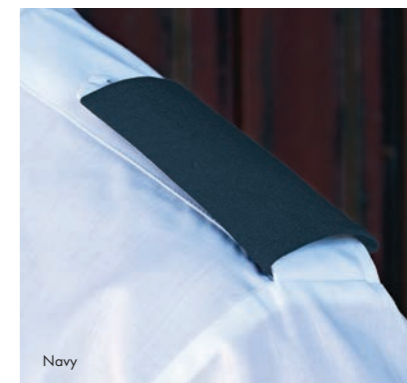
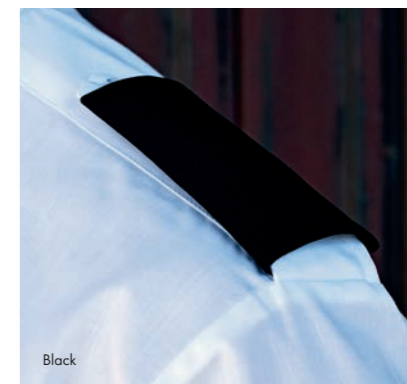
PR700 Work Tie ▪ Plain colour styling, Blade width 3.25"/8cm

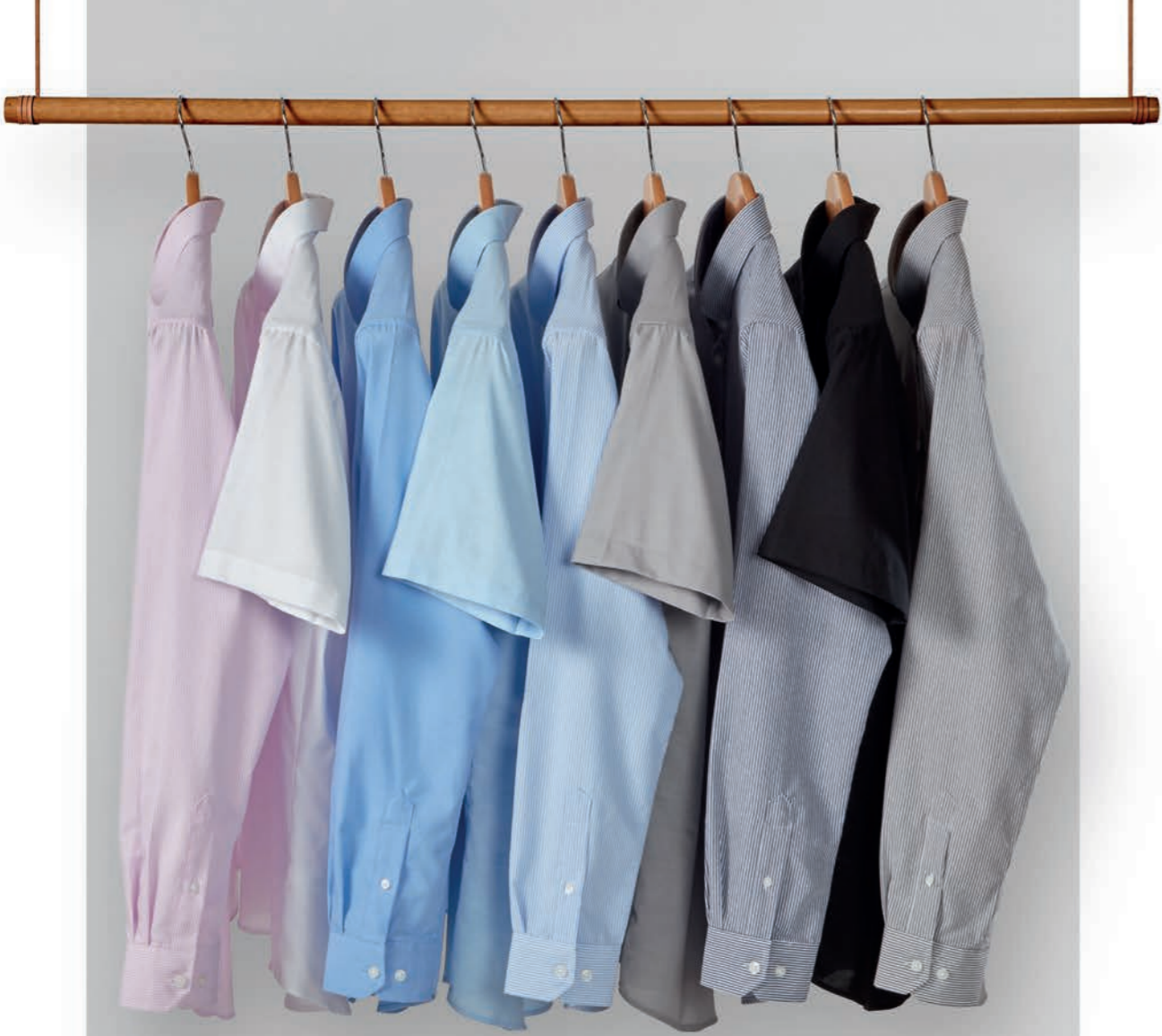
▪ 100% Polyester ▪ Wipe clean only ▪ 6 colours



PR710 Clip-on Work Tie ▪ Clip-on version of PR700, Steel clip attachment, Blade width 3.25"/8cm

▪ 100% Polyester ▪ Wipe clean only ▪ 6 colours





Signature OXFORD

Looking to elevate your look? Our Signature Oxford shirt can be worn in corporate or casual settings. Tailored in soft cotton with a raised, basket-woven appearance, it has a flattering fit that keeps its shape wash after wash thanks to the added durability of polyester.

Add a tie to the classic button-down collar and you're meeting ready. Loosen the neck, roll up the sleeves and you've got a look that will take you from workday to weekend.



Oxford Stripe

Cotton Rich Oxford Stripes Shirt

60% Cotton, 40% Polyester, 135gsm, 5 colours

PR238 Men's: Classic button-down collar, Contrast coloured inner neckband and cuff, Two button adjustable cuff ■ Sizes **S/34" – 3XL/54"**

PR338 Women's: Button-down collar on the underside, Contrast coloured inner neckband and cuff, Two button adjustable cuff ■ Sizes: **XS/8 – 2XL/18**





Long Sleeve Signature Oxford Shirt ■ 70% Cotton, 30% Polyester, 135gsm, 4 colours

PR234 Men's: Button-down collar, Left chest open mitred pocket, Double button cuff ■ Sizes: 14.5"/37cm – 19"/48cm

PR334 Women's: Soft collar styling, Rounded bottom hem, Bust and back darts ■ Sizes: 8/XS – 26/6XL

Modern Fit

Cotton Rich

Brandable



Short Sleeve Signature Oxford Shirt ■ 70% Cotton, 30% Polyester, 135gsm, 4 colours

PR236 Men's: Button-down collar, Left chest open mitred pocket, Rounded bottom hem ■ Sizes: 14.5"/37cm – 19"/48cm

PR336 Women's: Soft collar styling, Rounded bottom hem, Bust and back darts ■ Sizes: 8/XS – 26/6XL

40° Wash

Cotton Rich

Brandable

Signature
OXFORD

'Maxton' Check Long Sleeve Shirt

'Maxton' Check Long Sleeve Shirt ■ Button-down collar on the underside, Soft collar styling, Single button cuff ■ 65% Polyester, 35% Cotton Yarn Dyed Poplin, 110gsm, 5 colours.

PR252 Men's sizes: S/34" – 3XL/54" ■ **PR352** Women's sizes: XS/8 – 2XL/18



40° Wash Modern Fit Easy Care Brandable





Gingham Cotton Shirts

Long Sleeve Gingham Shirt ■ 100% Cotton Yarn Dyed Poplin, 115gsm, 4 colours

PR220 Men's: Soft collar styling, Two button adjustable cuff, Modern fit ■ Sizes: **XS/30" – 3XL/54"**

PR320 Women's: Soft collar styling, Two button adjustable cuff, Styled with bust and back darts ■ Sizes: **XS/8 – 3XL/20**

Short Sleeve Gingham Shirt ■ 100% Cotton Yarn Dyed Poplin, 115gsm, 4 colours

PR221 Men's: Soft collar styling, Curved hem, Modern fit ■ Sizes: **XS/30" – 3XL/54"**

PR321 Women's: Soft collar styling, Curved hem, Styled with bust and back darts ■ Sizes: **XS/8 – 3XL/20**



40° Wash

100% Cotton

Modern Fit

Brandable



PR321

PR221

Navy/White

Light Blue/White

Black/White

Red/White

PR220

PR320

Ties & Scarves

38
COLOURS

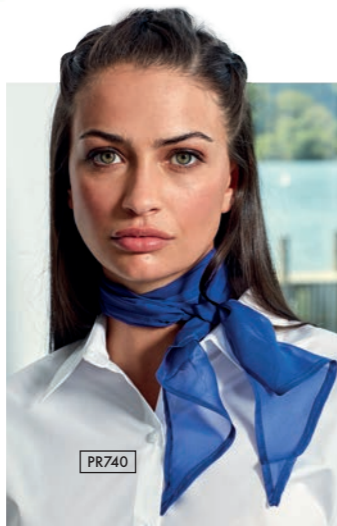


PR740 'Colours Collection'

Chiffon Scarf ■ Lightweight chiffon, Width 6.5"/16.5cm, Length 38.5"/98cm ■ 100% Polyester ■ Handwash ■ 38 colours

PR755 'Colours Collection'

Clip-on Satin Tie ■ Clip-on tie, Steel clip attachment, Blade width 3.34"/8.5cm ■ 100% Polyester ■ Handwash ■ 28 colours*



PR750 'Colours Collection' Satin Tie ■ Blade width 3.34"/8.5cm, Length 57"/144cm ■ 100% Polyester ■ 38 colours ■ 40° Wash

18
COLOURS



Mix & Match in colour



Orange Red Burgundy Fuchsia Magenta Purple Navy Royal Mid Blue Turquoise Black Grey Silver White Emerald Bottle Gold Khaki



Orange Red Burgundy Purple Navy Royal Mid Blue Turquoise Black Grey Silver Bottle Emerald Grass Lime Brown Gold Khaki



PR785 'Colours Originals'
Clip-on Fashion Tie ■ Clip-on tie, Steel clip attachment, Blade width 4"/10cm, Length 18"/47cm ■ 100% Polyester ■ Handwash ■ 18 colours

PR730 'Colours Originals'
Plain Business Scarf ■ Width 10"/25cm, Length 55"/140cm, ■ 100% Polyester ■ Handwash ■ 18 colours

PR765 'Colours Originals'
Fashion Tie ■ Matt appearance, Blade width 4"/10cm, Length 57"/144cm ■ 100% Polyester ■ 40C wash ■ 18 colours

PR780 PR781
PR783 PR787
Patterned Ties ■ Blade width 3"/7.5cm, Length 57"/144cm ■ 100% Polyester ■ Handwash



PR787 Puppy Tooth



PR780 Micro Waffle



PR783 Waffle Stripe



PR781 Micro Dot



Ties and Bow Ties



PR782 Double Stripe

Blade width 3"/7.5cm, Length 57"/144cm ■ 100% Polyester ■ Handwash ■ 6 colours



PR784 Sports Stripe



PR705 Bow Tie ■ Satin weave bow tie, Hook and bar fastening
■ 100% Polyester ■ Wipe clean ■ Colour: Black



PR793 Slim Tie ■ Satin weave, Blade width 2"/5cm, Length 58"/147cm ■ 100% Polyester
■ Wipe clean only ■ 5 colours

Skinny Ties



PR789 Slim Knitted Tie ■ Blade width 2"/5cm, Length 58"/147cm ■ 100% Polyester ■ Handwash ■ 6 colours



KNITWEAR



LAYER UP

Assemble your outfit for the colder months with contemporary layers from our knitwear collection. Classic V-neck sweaters, cardigans and sleeveless options that are cotton-rich for comfort and quality.





PR697



PR694



8
COLOURS

OEKO
TEX[®] STANDARD
100
11-55731
Shirley

Cotton Rich Knitwear

PR694 Men's V-neck Knitted Sweater

- Cotton-rich long sleeve sweater, V-neck styling, Ribbed knit cuffs and hem
- 55% Cotton, 45% Acrylic, 12 gauge knit
- Sizes: **2XS/28" – 4XL/58"** ▪ 8 colours

PR697 Women's V-neck Knitted Cardigan

- Cotton-rich long sleeve cardigan, Seven button fastening, Ribbed knit cuffs and hem
- 55% Cotton, 45% Acrylic, 12 gauge knit
- Sizes: **XS/8 – 5XL/24** ▪ 8 colours

40° Wash Cotton Rich Brandable



PR694

PR697

Styled with PR220 & PR320 'Microcheck' Gingham Shirts, see page 44



PR699

PR698

PR699 Men's Sleeveless Sweater ■ V-neck styling, Ribbed knit arm cuffs, neckline and hem, Cotton Rich ■ 55% Cotton, 45% Acrylic, 12 gauge knit ■ Sizes: **XS/30"** – **4XL/58"** ■ 3 colours

PR698 Women's Long-Length Knitted Cardigan ■ V-neck styling, Seven button fastening, Two front patch pockets ■ 55% Cotton, 45% Acrylic, 12 gauge knit ■ Sizes: **XS/8** – **5XL/24** ■ 3 colours

PR695 Men's Quarter-Zip Knitted Sweater ■ Cotton Rich, Quarter zipped, Ribbed knit collar, cuff and hem ■ 55% Cotton, 45% Acrylic, 12 gauge knit ■ Sizes: **XS/30"** – **4XL/58"** ■ 3 colours

PR696 Women's V-Neck Knitted Sweater ■ V-neck styling, Fine gauge knit, Cotton Rich, Ribbed knit cuffs and hem ■ 55% Cotton, 45% Acrylic, 12 gauge knit ■ Sizes: **XS/8** – **5XL/24** ■ 3 colours

Brandable

Cotton Rich

40° Wash



PR692



PR696

PR695

40° Wash

Cotton Rich

Brandable

Charcoal

Navy

Black

PR692 Men's Crew-Neck Cotton Rich Knitted Sweater ■ Fine knit, Crew-neck styling, Ribbed knit neck, hem and cuffs ■ 55% Cotton, 45% Acrylic, 12 gauge knit ■ Sizes: **2XS/28"** – **4XL/58"** ■ 3 colours



PR400

PR402

'Essential' Acrylics

PR400 'Essential' Acrylic Men's V-neck Sweater ■ Ribbed knit neck, hem and cuffs, Contemporary V-neck styling, Fine knit ■ 100% Acrylic, 12 gauge knit ■ Sizes: **XS/30" – 5XL/62"** ■ 2 colours

PR402 'Essential' Acrylic Women's V-neck Cardigan ■ Ribbed knit neck, hem and cuffs, Contemporary V-neck styling, Fine knit ■ 100% Acrylic, 12 gauge knit ■ Sizes: **XS/8 – 2XL/18** ■ 2 colours



40° Wash

Easy Care

Brandable

Performance 'Chino' Jeans

Performance 'Chino' Jeans ■ Front and back pockets, Rivet detail, Zip fly with metal button fastening on waistband, Stretch fabric ■ Regular leg 31"/79cm, Long leg 34"/86cm ■ 63% Polyester, 35% Cotton, 2% Elastane, 260gsm, 4 colours.

PR560 Men's sizes: XS/30" – 4XL/44" **PR570** Women's sizes: XS/8 – 5XL/24



STRETCH
60° Wash
Brandable



Trousers & Clip-on Braces

PR536 Women's Straight Leg Trousers

- Trousers with a deep waistband, YKK fastening zip, Cross-over waistband with two button fastening
- 100% Polyester, 185gsm
- Sizes: **XS**/8 – **5XL**/24, Regular leg 31"/79 cm, Long leg 34"/86 cm
- Colour: Black

40° Wash

Brandable



- ## PR701 Clip-on Trousers Braces
- Elastic 'Y' back strap braces, Three non-slip clip buckles for attachment, Fully adjustable with lock buckles
 - 60% Polyester, 40% Rubber
 - 5 colours



Workwear 'Cargo' Shorts



PR564 Men's Workwear 'Cargo' Shorts

- Mobile friendly pockets with hook and loop sealed fastening, Belt loops, metal button and YKK zip for fastening, Single patch pocket to the reverse
- 65% Recycled Polyester, 35% Cotton, 195gsm
- Sizes: **XS**/30" – **4XL**/44" ▪ 2 colours



60° Wash

Brandable

Performance 'Chino' Shorts

Performance 'Chino' Shorts ■ Front and back pockets, Rivet detail, Covered YKK zip fly with single metal button fastening on the waistband, Stretch fabric ■ 63% Polyester, 35% Cotton, 2% Elastane, 260gsm, 2 colours.

PR562 Men's sizes: XS/30" – 4XL/44" **PR572** Women's sizes: XS/8 – 5XL/24



STRETCH
60° Wash
Brandable



POLO SHIRTS

CLASSIC CONFIDENCE

It's a classic for a reason. Practical and versatile, a polo shirt is a staple for every working wardrobe. But that doesn't mean they have to be bland. Inspired by today's dynamic workplace, we've devised a colourful collection of polos that work wherever you do. In Coolchecker® and Coolchecker® Plus fabric that is breathable and wicking, so you'll never get hot under the collar. Heavyweight polycotton and spun dyed fabrics that keep their colour in a 60°C wash. With a choice of short or long sleeves, button or snap fastening. So, whatever you do, you can be confident a Premier polo will stand up to the job.

Models wear PR615 and PR616
Coolchecker Polo Shirts, see page 70



16
COLOURS



PR630

PR632



COOL[®]
CHECKER **Plus**

PREMIER[®]
UNIFORMS THAT WORK FOR YOU

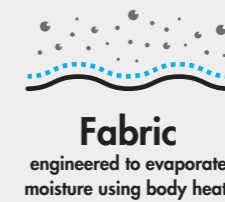
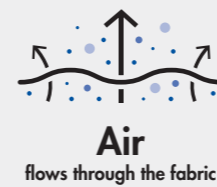
Performance Polo Shirts

Coolchecker® Plus Pique Polo ■ Double pique knit for heavier construction, Four channel yarn for superior wicking and breathability, Ribbed knit collar and cuffs, Three button placket, Snag and crease resistant, Silvadur™ technology for antimicrobial properties ■ 100% Polyester double pique knit, 185gsm, 16 colours

PR630 Men's sizes: 5/35" – *6XL/59" **PR632** Women's sizes: XS/8 – **4XL/22

*and **only available in selected colours

60° Wash Easy Care Brandable



silvadur[™]
The Science of Intelligent Treatments
Antimicrobial
which releases silver ions that
destroy the bacteria that
causes odour, material
degradation and discolouration.

20
COLOURS

Coolchecker® Polo Shirt


Coolchecker® Pique Polo Shirt ■ Side panels for fitted shape, Lightweight and breathable moisture wicking fabric, Three button placket, Ribbed knit collar and cuffs ■ 100% Polyester pique knit, 155gsm, 20 colours

PR615 Men's sizes: S/35" – *5XL/51"

PR616 Women's sizes: XS/8 – 2XL/18



COOL
CHECKER®



- Allows air flow through fabric
- Drawing moisture away from the body
- Fast dry and crease resistant

40° Wash

Modern Fit

Brandable



*only available in selected colours

COOL
CHECKER

PR615

PR616

11
COLOURS



Coolchecker[®] Contrast Polo Shirts

Contrast Tipped Coolchecker[®] Polo Shirt ▪ Contrast trim on collar, placket and sleeves, Side panels for fitted shape, Ribbed knit collar and cuffs, Three button placket ▪ 100% Polyester pique knit, 155gsm, 11 colours

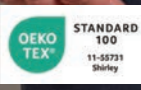
PR618 Men's sizes: S/35" – 4XL/48"

PR619 Women's sizes: XS/8 – 2XL/18

40° Wash Modern Fit Brandable



▪ Contrast trim ▪ Ribbed knit collar and cuffs



Recycled Spun Dyed Polo Shirt

Spun dyeing uses 66% less water, 75% fewer chemicals and 60% less CO₂ compared to traditional dyeing methods.

Recycled Spun Dyed Polo Shirt ■ Made with spun dyed recycled polyester yarn, Ribbed knit collar and cuffs, Three button placket ■ 100% Recycled Polyester, 160gsm, 3 colours

PR631 Men's sizes: S/35" – 4XL/53"

PR633 Women's sizes: XS/8 – 2XL/18



Black

French Navy

Dark Grey



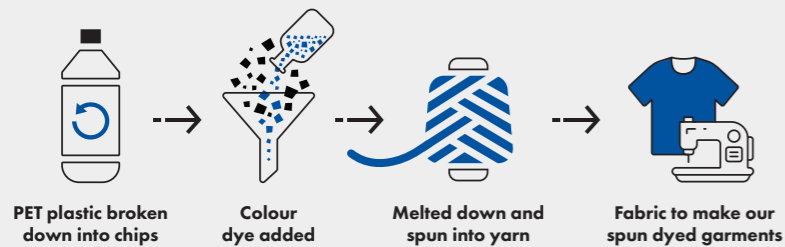
60° Wash

Brandable



PR633

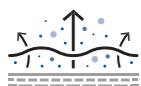
PR631





PR617

COOL
CHECKER®



- Allows air flow through fabric
- Drawing moisture away from the body
- Fast dry and crease resistant



Long Sleeve Coolchecker® Polo Shirt

PR617 Long Sleeve Coolchecker® Pique Polo ■ Ribbed knit collar and cuffs, Moisture management wicking fabric, Three button placket ■ 100% Polyester Pique, 155gsm ■ Sizes: **XS/33" – 4XL/48"** ■ 2 colours

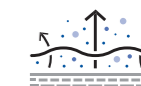
40° Wash

Brandable



PR612

COOL
CHECKER®



- Allows air flow through fabric
- Drawing moisture away from the body
- Fast dry and crease resistant



Snap Button Fastening

PR612 Coolchecker® Studded Polo ■ Two pop stud fastening on the placket, Wicking properties, Self-fabric collar ■ 100% Polyester pique, 140gsm ■ Sizes: **XS/33" – 3XL/50"** ■ 6 colours

60° Wash

Brandable



▪ Extra length through the body

Studded Polo

PR610 Studded Polo ▪ Three pop stud placket, Extra body length, Durable pique knit ▪ 65% Polyester, 35% Cotton, 200gsm ▪ Sizes: **S/34" – 3XL/52"** ▪ 4 colours

50° Wash

Brandable

'Essential' Heavyweight Polo Shirts



PR995

PR997

PR995 'Essential' Unisex Short Sleeve Workwear Polo Shirt

▪ Antimicrobial textile technology designed to kill microbes on the fabric surface, Ribbed knit collar and cuff, Two button placket, Extra body length ▪ 65% Polyester, 35% Cotton, powered by HeiQ Viroblock, 200gsm ▪ Sizes: **S/35" – 4XL/53"** ▪ 5 colours

PR997 'Essential' Unisex Long Sleeve Workwear Polo Shirt

▪ Antimicrobial textile technology designed to kill microbes on the fabric surface, Ribbed knit collar and cuff, Two button placket, Extra body length ▪ 65% Polyester, 35% Cotton, powered by HeiQ Viroblock, 200gsm ▪ Sizes: **S/35" – 4XL/53"** ▪ 2 colours

60° Wash

Brandable



HEIQ VIROBLOCK

Powered by HeiQ Viroblock, a world-leading innovative Swiss textile technology.



PR218

PR318

'Long-John' Roll-Sleeve Tee

'Long-John' Roll-Sleeve Tee ■ Roll-sleeve with button and tab fastening on the upper arm, Round neck with three button placket, Ribbed bound neck and cuffs ■ 82% Polyester, 14% Viscose, 4% Elastane, 190gsm, 5 colours.

PR218 Men's sizes: XS/30" – 3XL/54" **PR318** Women's sizes: XS/8 – 2XL/18



Black

Grey Marl

Indigo

White/Navy

White

40° Wash

Modern Fit

Easy Care

Brandable

'Comis' Cotton-Rich Tee

'Comis' Cotton-Rich Tee ■ Narrow banded collar, placket with single button, soft feel
 ■ 60% Cotton, 40% Recycled Polyester, 160gsm. **Grey Marl:** 90% Cotton, 10% Viscose, 160gsm, 5 colours

PR219 Men's sizes: S/34" – 3XL/54"

PR319 Women's sizes: XS/8 – 2XL/18



Black Navy Marl Grey Marl[†] Khaki White

60° Wash

Cotton Rich

Brandable



[†] Grey Marl does not contain recycled polyester



PR219

PR319



Chambray Shirt Organic & Fairtrade Certified

These garments are certified to display the Fairtrade Cotton Mark. It means the cotton they're made from has been traded, audited and sourced from Fairtrade producers. Now that's a label that's definitely worth wearing.

Chambray Shirt - Organic & Fairtrade Certified ■ Two chest pockets with combined pen pocket to the left ■ Double button cuff for adjustment with a single button sleeve guard ■ Button-down collar on the underside ■ 100% Organic Cotton, Fairtrade Certified, 160gsm, 2 colours

PR247 Men's sizes: S/34" - 3XL/54" **PR347** Women's sizes: XS/8 - 3XL/20



Contains 100% OCS Certified Organically Grown Cotton
Certified by Control Union
CU-COC-1191916

- 40° Wash
- Modern Fit
- 100% Cotton
- Brandable

Jean Stitch Denim Shirts

Jean Stitch Denim Shirt ■ 100% Cotton Ring Spun Denim, 155gsm, 2 colours

PR222 Men's: Contrast stitch details, Left chest button-down chest pocket, Buttoned cuff and sleeve guard ■ Sizes: **XS/30" – 3XL/54"**

PR322 Women's: Contrast stitch details, Two button-down chest pockets, Buttoned cuff and sleeve guard ■ Sizes: **XS/8 – 3XL/20**



100% Cotton Modern Fit Brandable



'Mulligan' Check Shirts

Brandable



'Mulligan' Check Long Sleeve Shirt ■ Roll-sleeve option with button fastening on the upper arm, Narrow soft collar styling, Curved hem ■ 100% Cotton Yarn Dyed Poplin, 115gsm, 4 colours.

PR250 Men's sizes: S/34" – 3XL/54" **PR350** Women's sizes: XS/8 – 2XL/18



■ Roll-sleeve option with button and tab fastening



'Ginmill' Check Shirts

'Ginmill' Check Long Sleeve Cotton Shirt ■ Roll-sleeve option with button fastening on the upper arm, Narrow soft collar styling, Curved hem ■ 100% Cotton Yarn Dyed Poplin, 115gsm, 1 colour.

PR254 Men's sizes: S/34" – 3XL/54" **PR354** Women's sizes: XS/8 – 2XL/18

40° Wash Modern Fit 100% Cotton Brandable



Waistcoats

For a refined service

Hospitality Waistcoat ■ 65% Polyester, 35% Cotton, 195gsm, Colour: Black

PR620 Men's: Self-fabric back, Two functional watch pockets, Five button fastening ■ Sizes: **S/36" – 2XL/52"**

PR621 Women's: Self-fabric back, Two functional watch pockets, Four button fastening ■ Sizes: **S/10 – 2XL/18**

60° Wash

Brandable



Herringbone Waistcoat

Herringbone Waistcoat ■ Satin lining to the underside and reverse, Lapel collar, Adjusting buckle on the back ■ 50% Wool, 45% Polyester, 5% mixed fibres, 300gsm, 3 colours.

PR625 Men's sizes: **XS/32" – 2XL/52"**

PR626 Women's sizes: **XS/8 – 2XL/18**

30° Wash

Brandable



Brown Check

Charcoal

Navy



Lined Polyester Waistcoat

Lined Polyester Waistcoat ■ 100% Polyester, 185gsm, Colour: Black

PR622 Men's: Satin back with adjuster, Two functional watch pockets, Five button fastening ■ Sizes: **2XS/30" – 2XL/52"**

PR623 Women's: Satin back with adjuster, Two functional watch pockets, Four button fastening ■ Sizes: **2XS/6 – 2XL/18**

40° Wash

Brandable

■ Satin back with adjuster





THAT COLOUR LOOKS GREAT ON YOU!

THE 'COLOURS COLLECTION'

What's the number one reason customers love our aprons? It has to be our incredible array of colours – a choice that simply can't be matched.

Customisation comes a close second. Because Premier aprons are also designed for branding and personalisation. And that includes our exclusive Swap & Pop aprons that even let you

customise your neckband and waist tie colours! We think you'll have some fun with that one!

Whether you mix and match apron styles and colours to reflect your brand identity or give staff the option to express themselves with a bright neckband, only Premier lets you indulge your love of colour. With 13 apron styles and up to 62 shades to play with, the possibilities are endless.



Models wear PR150, PR158, PR154 and PR151

Branding opportunities

Make a strong brand statement with colour. Take inspiration from your interiors and furnishings and run this palette through your staff uniforms. Whether it's loud and proud or soft and muted, we offer a huge choice of colour so you can create your uniform your way.







THE 'COLOURS COLLECTION'



Your colour scheme

Pick a shade that complements your branding.

CMYK colour breakdown

	C: 61 M: 35 Y: 65 K: 35		C: 13 M: 16 Y: 25 K: 0
	C: 90 M: 80 Y: 47 K: 56		C: 16 M: 31 Y: 19 K: 0



Models wear...

- 1 PR150 'Colours Collection' Bib Apron, page 96
 - 2 PR158 'Colours Collection' Bar Apron with Pocket, see page 101
 - 3 PR154 'Colours Collection' Pocket Bib Apron, see page 98
 - 4 PR151 'Colours Collection' Mid-Length Apron, see page 98
- PR347 Chambray Shirt - Organic & Fairtrade Certified, page 85
- PR906 Chef's Zip-Close Short Sleeve Jacket, see page 139
- PR219 'Comis' Cotton-Rich Tee, see page 82
- PR347 Chambray Shirt - Organic & Fairtrade Certified, page 85

'Colours Collection' Bib Apron

PR150 'Colours Collection' Bib Apron ■ Adjustable buckle on neckband, 100cm self-fabric ties, Two sizes available ■ 65% Polyester, 35% Cotton, 195gsm. Denim: 70% Cotton, 30% Polyester, 265gsm ■ Size: 86cm x 72cm

*Extra large size: 102cm x 99cm (Black and White only)



85° Wash Brandable



Cornflower	Mushroom
Royal	Latte
Marine Blue	Khaki
Navy	Natural
Indigo Denim	Camel
Blue Denim	Mustard
Cyan	Sunflower
Light Blue	Yellow
Peacock	Lemon
Mid Blue	Lime
Sapphire	Oasis Green
Lilac	Olive
Lavender	Moss Green
Purple	Aqua
Rich Violet	Duck Egg Blue
Aubergine	Turquoise
Fuchsia	Teal
Magenta	Emerald
Pink	Kelly
Rose	Pistachio
Hot Pink	Apple
Raspberry Crush	Bottle
Burgundy	Sage
Red	*White
Salsa	Black Denim
Strawberry Red	Grey Denim
Orange	Silver
Terracotta	Steel
Chestnut	Charcoal
Brown	Dark Grey
Mocha	*Black



62
COLOURS

UP TO
50
COLOURS



PR154

PR151

Burgundy	Brown
Red	Strawberry Red
Orange	Terracotta
Fuchsia	Sunflower
Hot Pink	*Lemon
Rich Violet	*Camel
Purple	Khaki
Aubergine	*Latte
Chestnut	Natural
Mocha	*Grey Denim
*Rose	*Light Blue
Pink	Silver
*Lilac	White
*Mid Blue	Aqua
Turquoise	*Duck Egg
Teal	Apple
Sapphire	Lime
Marine Blue	Oasis Green
*Blue Denim	Sage
Steel	Olive
*Charcoal	Dark Grey
Navy	*Moss Green
Royal	Emerald
*Indigo Denim	Bottle
*Black Denim	Black



'Colours Collection' Aprons

PR151 'Colours Collection' Mid-Length Apron ■ Mid-length waist apron, 90cm self fabric ties, Width 70cm, length 50cm ■ 65% Polyester, 35% Cotton, 195gsm ■ 36 colours*

*PR151 not available in these colours

PR154 'Colours Collection' Pocket Bib Apron ■ Sliding adjustable buckle on neck band, Width 72cm, length 86cm, Tablet friendly centre pocket with combined pen slot ■ 65% Polyester, 35% Cotton, 195gsm ■ 50 colours



85° Wash

Brandable

2 in 1 Apron

PR159 'Colours Collection' 2-in-1 Apron ■ One apron worn two ways, Bib and waist apron styles, Pocket features on both styles ■ 65% Polyester, 35% Cotton, 195gsm ■ 10 colours



Children's Apron

PR149 'Colours Collection' Children's Bib Apron ■ Safety release mechanism on neckband, Infant sizing: 43cm wide, 53cm long, Junior sizing: 48 wide, 63cm long ■ 65% Polyester, 35% Cotton, 195gsm ■ Sizes: Infant 3-6 years, Junior 7-10 years ■ 16 colours



Pink	Natural	Aqua	White
Fuchsia	Sunflower	Lime	Silver
Hot Pink	Khaki	Emerald	*Grey Denim
Orange	Sage	Bottle	Turquoise
Red	Olive	Purple	*Blue Denim
Burgundy	Dark Grey	Royal	*Black Denim
Brown	Black	Navy	*Indigo Denim

*PR158 not available in these colours

24
COLOURS

28
COLOURS

PR158

PR155

Pocket Waist Aprons

PR155 'Colours Collection' 3 Pocket Waist Apron ■ Three open pockets, 90cm self-fabric ties, Width 60cm, length 33cm ■ 65% Polyester, 35% Cotton, 195gsm ■ 28 colours

PR158 'Colours Collection' Bar Apron with Pocket ■ Tablet friendly centre pocket with combined pen slot, 90cm self-fabric ties, Width 80cm, length 90cm ■ 65% Polyester, 35% Cotton, 195gsm ■ 24 colours*

85° Wash

Brandable



10
COLOURS

PR159



Can be worn as a bib apron, doubles over and neck ties are secured away to form a waist apron.



16
COLOURS

PR149



85° Wash

Brandable



NEW



Customise Your Apron With 'Swap & Pop'

'Swap & Pop' Customisable Apron & Straps ■ 65% Recycled Polyester, 35% Cotton, 195gsm ■ One size

PR190 Apron body: Straps sold separately for dual colour branding (see PR191), Fitted with snap-action press studs to secure straps in place, Self fabric cloth holder, Made with recycled polyester ■ 10 colours

PR191 Apron straps: Apron straps with body sold separately for dual colour branding (PR190), Fitted with strong snap-action press studs to secure to apron body, Neckband with adjustable sliding buckle, Made with recycled polyester, Self coloured caps on press studs for colour continuity ■ 20 colours



STEP ONE

Choose your PR190 apron body



STEP TWO

Choose your set of PR191 neckband and waist ties



STEP THREE

Pop them all together

PR190 Apron body and PR191 Straps are sold separately



60° Wash

Brandable

Contrast Bib Apron

PR162 'Colours Collection' Contrast Bib Apron

▪ Colour contrasting vertical panel, Sliding adjustable buckle on neckband, Two front slanted pockets ▪ 65% Polyester, 35% Cotton, 195gsm ▪ 7 colours



Brandable



7
COLOURS



6
COLOURS



NEW

Sage

Dark Grey

Indigo Denim

Navy

Black Denim

Black

Zip Pocket Waist Apron

PR105 Zip Pocket Waist Apron ▪ Two zipped closed pockets, Centre open pocket, Width 60cm, length 33cm ▪ 65% Polyester, 35% Cotton, 195gsm ▪ Colour: Black



Two zipped pockets

85° Wash

Brandable

Black



'Colours Collection' Mid-Length Apron with Pocket

PR141 'Colours Collection' Mid-Length Apron with Pocket ▪ Tablet friendly centre pocket with combined pen pocket, 90cm self-fabric ties, 70cm wide by 50 cm long ▪ 65% Recycled Polyester, 35% Cotton, 195gsm. Denims: 70% Cotton, 30% Recycled Polyester, 275gsm ▪ 6 colours

85° Wash

Brandable



Economy Aprons



PR165 'Essential' Bib Apron ■ Classic bib apron, Width 67cm, length 78cm, 75cm self-fabric ties
 ■ *Black: 80% Polyester, 20% Cotton. Colours: 65% Polyester, 35% Cotton, 170gsm ■ 6 colours

85° Wash

Brandable



6
COLOURS



'Antimicrobial' Apron

PR996 'Antimicrobial' Apron ■ Antimicrobial textile technology designed to kill microbes, germs and bacteria on the fabric surface, Buckle on the neckband for height adjustment, 86cm long x 72cm wide, Self fabric ties ■ 65% Polyester, 35% Cotton, powered by HeiQ Viroblock, 195gsm ■ 5 colours



60° Wash

Brandable



PR996

PR167



PR167 Polyester Bib Apron ■ Adjustable sliding buckle on neckband, Width 72cm, length 86cm, 90cm self-fabric ties ■ 100% Polyester, 195gsm ■ Colour: White

40° Wash

Brandable





ARTISAN APRONS

We've taken Artisan style beyond rustic charm, to a chic, contemporary look that reveals the textures and weaves of premium fabrics.

Organic denim. Waxed look cotton. Faux leather trims. Our exciting collection of Artisan style aprons are easy on the eye - and even easier to wear. From the soft lines and curved edges of our 'Artisan's Choice' apron, to the kangaroo style pockets and adjustable metal buckles on our Jean Stitch Denim aprons. Quality garments that are well made and hard wearing to create an inspirational look.

Jean Stitch Denim Aprons

PR126 Jean Stitch Denim Bib Apron ■ Four 'kangaroo' style pockets with rivet detail, 90cm self-fabric ties, Adjustable buckle on neck band, Width 72cm, length 86cm ■ 70% Cotton, 30% Polyester, 265gsm ■ 2 colours



PR125 Jean Stitch Denim Waist Apron ■ Four 'kangaroo' style pockets with rivet detail, Contrast stitch detail, Length 39.5cm ■ 70% Cotton, 30% Polyester, 265gsm ■ 2 colours



85° Wash

Cotton Rich

Brandable



Styled with PR202 and PR302 Khaki Poplin short sleeve shirt, page 30





Contrast Denim

PR127 'Domain' Contrast Denim Bib Apron ■ Neckband with buckle fastening for height adjustment, Centre pocket with contrast trim, including pen compartment, Metal eyelets secure 100cm contrast fabric ties ■ 70% Cotton, 30% Polyester, 265gsm ■ 2 colours

PR128 'Domain' Contrast Denim Waist Apron ■ Mid-length waist Apron measuring 50cm long by 70cm wide, Centre pocket with contrast trim, including pen compartment, Metal eyelets secure 100cm contrast fabric ties ■ 70% Cotton, 30% Polyester, 265gsm ■ 2 colours



- 85° Wash
- Cotton Rich
- Brandable



Waxed-look Cotton Aprons

PR134 'District' Waxed-Look Bib Apron ■ Durable waxed look finish, Oversized jean style pocket with stitch and rivet detail, Contrast colour ties secured in place with metal eyelets, Fabric features including, patch pocket and cloth holder ■ 100% Cotton Denim with Acrylic 'Waxed Look' Coating, 350gsm ■ 2 colours

PR135 'Division' Waxed-Look Waist Apron ■ Durable waxed look finish giving a water repellent surface, Contrast fabric features for function and decoration, Oversized jean style pocket with stitch rivet detail, Contrast colour ties secured in place with metal eyelets ■ 100% Cotton Denim with Acrylic 'Waxed Look' coating, 350gsm ■ 4 colours

PR136 'Division' Waxed-Look Bib Apron with Faux Leather ■ Durable waxed look finish giving a water repellent surface, Contrast fabric features for function and decoration, Faux leather ties and neckband with adjustable buckle, Tinted denim effect created by contrast coloured yarns ■ 100% Cotton Denim with Acrylic 'Waxed Look' coating, 350gsm ■ 4 colours



Denim Cotton Bib Apron - Organic & Fairtrade Certified

40° Wash | 100% Cotton | Brandable

PR113 Denim Cotton Bib Apron - Organic & Fairtrade Certified ■ Two mitred pockets measuring 20cm deep x 19.5cm wide, Antique brass/gun metal buckle on neckband for height adjustment, 80cm long x 72cm wide with 107cm long ties, Care label printed on the underside that highlights the environmental credentials of this style ■ 100% Cotton, Organic & Fairtrade Certified, 235gsm ■ 3 colours



■ Antique brass/gun metal buckle



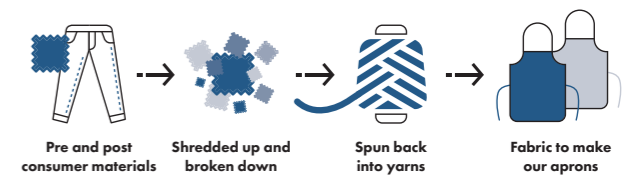
Contains 100% OCS Certified Organically Grown Cotton
Certified by Control Union
CB-CUC-1119298



'Regenerate' Bib Apron

PR122 'Regenerate' Bib Apron ■ Slanted side pockets with contrast trim, Adjustable knotted neckband, Contrast stitching, Recycled cotton from waste denim, **Black Denim:** 53% Recycled Cotton, 41% Recycled Polyester, 6% Recycled Viscose, **Indigo Denim:** 58% Recycled Cotton, 36% Recycled Polyester, 6% Recycled Viscose, **Grey Denim:** 55% Recycled Cotton, 36% Recycled Polyester, 9% Recycled Viscose, **Natural:** 44% Recycled Cotton, 37% Recycled Polyester, 19% Recycled Viscose, 275gsm ■ 4 colours

60° Wash | Cotton Rich | Brandable



'Metro' Hip Apron

PR138 'Metro' Utility Hip Apron ■ Tablet-friendly jeans style riveted pocket, Zip-fastening pocket, Adjustable self-fabric waistband with carabiner fastener ■ 100% Cotton Canvas, 320gsm. Denim: 70% Cotton, 30% Polyester, 265gsm ■ 4 colours

85° Wash | 100% Cotton† | Brandable



PR138

'Chino' Cotton Apron

PR132 'Chino' Bib Apron ■ Full bib Apron measuring 86cm long by 72cm wide, 'Chino' style stitched pockets with rivets, Neckband with buckle and adjustable snap button fastening ■ 100% Cotton, 235gsm ■ 4 colours

85° Wash | 100% Cotton | Brandable



PR132

100% Organic Cotton Bib Apron

PR102 100% Organic Cotton Bib Apron ■ 90cm self-fabric ties, Self-fabric neckband, Width 60cm, Length 87cm ■ 100% Organic Cotton, 240gsm ■ 20 colours

85° Wash

100% Cotton

Brandable



20
COLOURS

Aubergine

Brown

Burgundy

Red

Hot Pink

Orange

Navy

Royal

Purple

Turquoise

Steel

Silver

Dark Grey

White

Natural

Khaki

Apple

Lime

Bottle

Black

▪ Gun metal/antique brass eyelets



▪ Can be worn as a waist apron



▪ Rounded edges create soft lines



'Artisan's Choice' Double Pocket Canvas Apron

PR181 'Artisan's Choice' Double Pocket Canvas Apron ▪ Heavyweight canvas bib apron with rounded edges, Adjustable knotted neckband and matching waist ties, Centre double pocket, Wear as a full bib or half waist apron, Cotton-rich with recycled polyester ▪ 60% Cotton, 40% Recycled Polyester, 310gsm ▪ 4 colours



Black

Dark Grey

Olive

Natural



Contains 40% RCS Certified Recycled Post Consumer Polyester Certified by Control Union GS-2502-101938



60° Wash

Brandable

NEW





Contains 100% OCS Certified Organically Grown Cotton
Certified by Control Union
CB-CUC-1119298



Cotton Aprons - Organic & Fairtrade Certified

PR112 Cotton Bib Apron, Organic & Fairtrade Certified ■ Sliding adjustable buckle on neckband, Centre pocket, Width 60cm, Length 84cm ■ 100% Cotton - Fairtrade Certified, 200gsm ■ Colour: Black

PR114 Cotton Waist Apron, Organic & Fairtrade Certified ■ 90cm self-fabric ties, Width 70cm, Length 50cm ■ 100% Cotton - Fairtrade Certified, 200gsm ■ Colour: Black

- 40° Wash
- 100% Cotton
- Brandable



Recycled Polyester & Organic Cotton Apron

PR120 Recycled Polyester and Cotton Bib Apron, Organic & Fairtrade Certified ■ Two slanted side pockets measuring 24cm depth by 18cm wide, Adjustable buckle on neckband, Care label printed on the underside that highlights the environmental credentials of this style ■ 65% Recycled Polyester, 35% Cotton, Organic & Fairtrade Certified, 280gsm ■ 5 colours

- 60° Wash
- Brandable



'Barley' Contrast Stitch Bib Apron

PR121 'Barley' Contrast Stitch Bib Apron ■ Eyelet and rivet detail, Adjustable antique brass buckle on neckband, Side pockets and centre zipped pocket, Contrast stitching ■ 65% Recycled Polyester, 35% Cotton, 195gsm ■ 4 colours

60° Wash

Brandable



■ Contrast stitching



'Annex' Oxford Bib Apron

PR144 'Annex' Oxford Bib Apron ■ Faux leather neckband with buckle and rivet detail, Faux leather cloth holder and side tabs with rivet detail, Centre pocket, Double D-ring fastening to the waist ■ 100% Cotton Yarn Dyed Oxford Weave, 220gsm ■ 5 colours

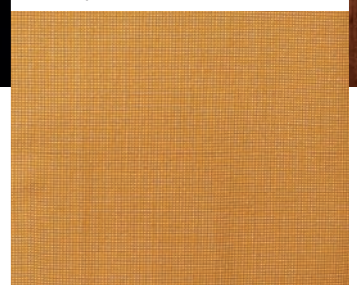
60° Wash

100% Cotton

Brandable



■ Yarn dyed Oxford weave



'Calibre' Cotton Canvas Aprons



PR130 'Calibre' Heavy Cotton Canvas Bib Apron ▪ Full bib Apron measuring 86cm long by 72cm wide, Heavyweight and durable, Oversized eyelet for knotted neckband ▪ 100% Cotton Canvas, 320gsm ▪ 8 colours

PR131 'Calibre' Heavy Cotton Canvas Waist Apron ▪ Mid-length waist Apron measuring 50cm long by 70cm wide, Heavyweight and durable, Metal eyelets secure 90cm self fabric waist ties ▪ 100% Cotton Canvas, 320gsm ▪ 8 colours



▪ Oversized eyelet for neckband

- 85° Wash
- 100% Cotton
- Brandable



PR137 'Calibre' Heavy Cotton Canvas Pocket Apron ▪ Four 'kangaroo' style stitched pockets, Oversized eyelet for knotted neckband, Heavyweight and durable ▪ 100% Cotton Canvas, 320gsm ▪ 8 colours





OEKO TEX
STANDARD 100
11-55731
Shirley

85° Wash
Brandable

PR129



Black Faux Leather



Brown Faux Leather



OEKO TEX
STANDARD 100
11-55731
Shirley

PR119

Cross-Back 'Barista' Bib Apron

PR129 Cross-Back 'Barista' Bib Apron ▪ Supplied with self-fabric straps, Alternative interchangeable straps available (PR119), Front centre pocket with built-in pen slot ▪ Canvas: 100% Cotton, 320gsm. Denims: 70% Cotton, 30% Polyester, 265gsm ▪ 8 colours

PR119 Cross-Back Interchangeable Apron Straps ▪ Alternative straps for PR129 Cross Back 'Barista' Bib Apron, Fixed with a buckle fastener to hook on to the main body of the apron, Measuring 170cm x 3cm ▪ 100% Polyurethane ▪ 2 colours

Choose alternative apron straps for an individual look



▪ Self-fabric ties



Black/Black Black/Brown Navy/Brown Khaki/Brown

'Espresso' Bib Apron

PR123 'Espresso' Bib Apron ▪ Faux leather trim and neckband, Press stud buttons on neckband for height adjustment, Two handy pleat pockets measuring 13cm ▪ 65% Polyester, 35% Cotton with faux leather trim, 195gsm ▪ 4 colours

60° Wash Brandable



▪ Faux leather trim



▪ 90cm self-fabric ties



OEKO TEX
STANDARD 100
11-55731
Shirley

PR123

PR 145 Children's Waterproof Apron ■ Safety release mechanism on neckband, Waterproof fabric, 50cm self-fabric ties ■ 100% Polyester with Polyurethane coating, 110gsm ■ Sizes: Infant 3-6 years, Junior 7-10 years ■ 8 colours



60° Wash

Brandable

8 COLOURS



PR145



PR174

Waterproof Wrap Around Tunic

40° Wash Brandable

PR174 Waterproof Wrap Around Tunic ■ Waterproof and bleach resistant, V-neck styling, Double centre pocket, Flattering feminine fit measuring 86cm in length ■ 100% Polyester with Polyurethane coating, 110gsm ■ Sizes: **S-M**/10-12, **L-XL**/14-16 ■ 4 colours



8 COLOURS



PR115

Waterproof Aprons

PR115 Waterproof Bib Apron ■ Adjustable buckle on neckband, Waterproof and bleach resistant fabric, 90cm self fabric ties ■ 100% Polyester with Polyurethane coating, 110gsm ■ 8 colours



60° Wash

Brandable

'Tulip' Wrap Around Tunic

PR177 'Tulip' Wrap-Around Tunic ■ Over-the-head style, V-neck styling, Centre patch pocket ■ 100% polyester, 185gsm ■ Sizes: **S-M**/10-12, **L-XL**/14-16 ■ 4 colours



Brandable

FASTENING TIP

Bring the ties from back to front and tie round your waist on the underside, then take front ties and fasten at the back.



PR177



Tabards

PR172 Long Length Pocket Tabard ▪ Pull-on coverall with a length of 78cm, Side tabs with adjustable press stud fastening, Centre pocket ▪ 65% Polyester, 35% Cotton, 195gsm ▪ Sizes: **S/10 – XL/16** ▪ 3 colours

85° Wash

Brandable



PR172



PR171 Pocket Tabard ▪ Pull-on coverall with a length of 68cm, Side tabs with adjustable press stud fastening, Centre pocket ▪ 65% Polyester, 35% Cotton, 195gsm ▪ Sizes: **S/10 – 3XL/20** ▪ 16 colours

85° Wash

Brandable



PR171

16
COLOURS



CHEFSWEAR

WE'RE READY TO TAKE YOUR ORDER

For 2024, we've spiced things up in the kitchen. Chefs spend hours creating exceptional dishes from the finest ingredients, so we turned the tables and asked them what ingredients they need to succeed. The result is uniform choices that celebrate the sheer brilliance, creativity and determination of chefs.

We started with technical Coolchecker® fabrics that wick away moisture and offer maximum comfort and durability. Then we added the kind of attention to detail that we know chefs love. Like zipped chef's jackets with a clever collar loop to contain apron straps. Comfortable cargo inspired pants together with slim fit and denim options. Plus all the pen pockets, under arm vents and press stud fastenings chefs need to put in a gruelling shift.

Get ready to order.

Models wear PR656, PR657 & PR671 see pages, 144 & 148



Chef's Recycled Short Sleeve Shirt & Trouser

PR904 Chef's Recycled Short Sleeve Shirt ■ Made with recycled polyester, Mandarin collar with press stud fastening down the centre placket, Contrast coloured inner neckband helps to conceal marks from day-to-day wear, Chest pocket ■ 65% Recycled Polyester, 35% Cotton, 170gsm ■ Sizes: **XS/30"** – **3XL/54"** ■ 2 colours

PR557 Chef's Recycled Cargo Trouser ■ Made with recycled polyester, Tapered lower leg with optional turn-up hems, Elasticated waistband, drawcord and mock fly, Side slip pockets ■ 65% Recycled Polyester, 35% Cotton, 170gsm ■ Sizes: **S/32-34"** – **3XL/44-46"** ■ 1 colour

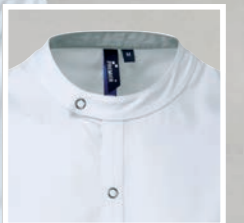
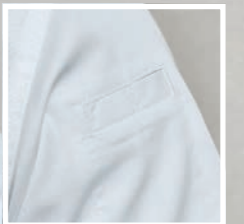
60° Wash

Brandable



NEW

PR904





PR906



Zippered Chef's Jackets

PR906 Chef's Zip-Close Short Sleeve Jacket

▪ Zip through fastening, Double pen pocket on left sleeve, Colour contrast underarm, Mandarin collar
 ▪ White: 65% Polyester, 35% Cotton, 170gsm, Denim: 60% Cotton, 40% Polyester, 230gsm ▪ Sizes: **XS/30"** – **2XL/50"** ▪ 3 colours

60° Wash

Cotton Rich

Brandable



▪ Zip through fastening

▪ Loop for securing apron in place

PR906



PR664

PR665

SE BAKERY



85° Wash
Brandable



Press Stud Fastening Jackets

PR664 Short Sleeve Studded Chef's Jacket ■ Mandarin collar, Ten press-stud fastening, Wrap over style ■ 65% Polyester, 35% Cotton, 195gsm ■ Sizes: **XS/30"** – **3XL/54"** ■ 2 colours

PR665 Long Sleeve Studded Chef's Jacket ■ Mandarin collar, Ten press-stud fastening, Wrap over style ■ 65% Polyester, 35% Cotton, 195gsm ■ Sizes: **XS/30"** – **3XL/54"** ■ 2 colours

PR660 Denim Studded Chef's Jacket ■ Cotton rich chef's jacket, Ten press-stud fastening, Wrap over style ■ 60% Cotton, 40% Polyester, 230gsm ■ Sizes: **XS/30"** – **3XL/54"** ■ 2 colours



PR660

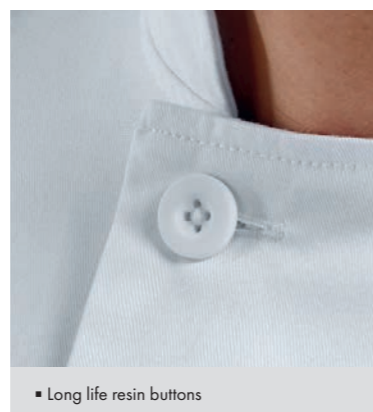
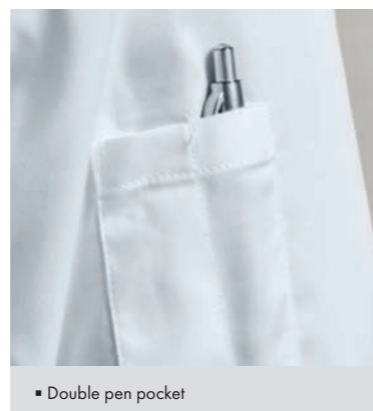
60° Wash
Cotton Rich
Brandable



'Essential' Chef's Jackets

PR900 'Essential' Short Sleeve Chef's Jacket ▪ Five button wrap over fastening, Long life resin buttons, Mandarin collar ▪ 65% Polyester, 35% Cotton, 170gsm ▪ Sizes: **XS/30"** – **4XL/58"** ▪ 2 colours

PR901 'Essential' Long Sleeve Chef's Jacket ▪ Five button wrap over fastening, Long life resin buttons, Double pen pocket on left sleeve, Mandarin collar ▪ 65% Polyester, 35% Cotton, 170gsm ▪ Sizes: **XS/30"** – **4XL/58"** ▪ 2 colours



85° Wash

Brandable





PR656

PR657

Classic Chef's Jackets

PR656 Short Sleeve Chef's Jacket ▪ Ten button hole wrap over fastening, Double pen pocket on left sleeve, Mandarin collar ▪ 65% Polyester, 35% Cotton, 195gsm ▪ Sizes: **XS/30" – 4XL/58"** ▪ 3 colours

PR657 Long Sleeve Chef's Jacket ▪ Ten button hole wrap over fastening, Mandarin collar ▪ 65% Polyester, 35% Cotton, 195gsm ▪ Sizes: **XS/30" – 4XL/58"** ▪ 3 colours



85° Wash

Brandable



Coolchecker® Chef's Jackets

PR902 Coolchecker® Short Sleeve Chef's Jacket

PR903 Coolchecker® Long Sleeve Chef's Jacket

Coolchecker® fabric mesh back panel for wicking and breathability, Double pen pocket on left sleeve, Self-fabric ten button fastening ■ 65% Polyester, 35% Cotton, 170gsm ■ Sizes: **XS/30"** – **2XL/50"** ■ 2 colours

60° Wash

Brandable



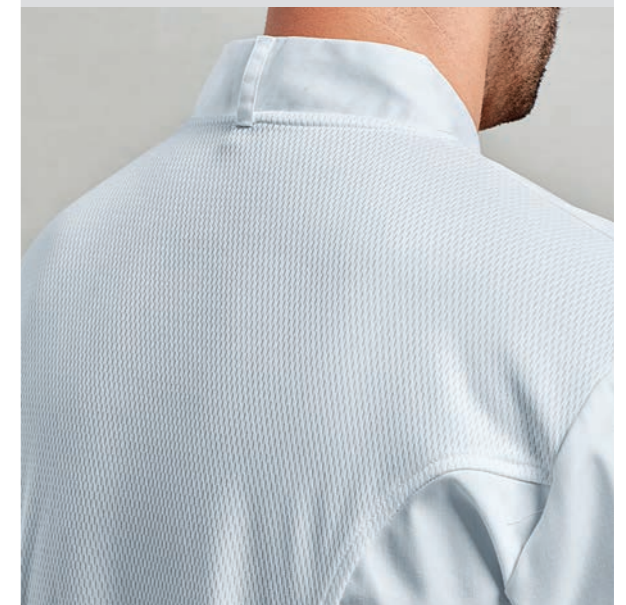
PR902

PR903

■ Double pen pocket on left sleeve



■ Coolchecker® fabric mesh back panel for wicking and breathability





PR670

PR671

- Ten button hole wrap over fastening
- Double pen pocket on left sleeve

Women's Styles

PR670 Women's Short Sleeve Chef's Jacket ▪ Ten button hole wrap over fastening, Double pen pocket on left sleeve, Back panels for a more fitted style
 ▪ 65% Polyester, 35% Cotton, 195gsm ▪ Sizes: **XS/8** – **2XL/18** ▪ 1 colour

PR671 Women's Long Sleeve Chef's Jacket ▪ Ten button hole wrap over fastening, Double pen pocket on left sleeve, Back panels for a more fitted style ▪
 65% Polyester, 35% Cotton, 195gsm ▪ Sizes: **XS/8** – **2XL/18** ▪ 1 colour

85° Wash

Brandable



White

White

Long Sleeve 'Cuisine' Chef's Jacket

PR661 Long Sleeve 'Cuisine' Chef's Jacket ▪ Mandarin collar, Comes with Black removable studs (other colours available, see page 151), Ten hole wrap fastening
 ▪ 65% Polyester, 35% Cotton, 195gsm ▪ Sizes: **XS/30"** – **4XL/58"** ▪ 2 colours

85° Wash

Brandable



White

Black



PR661



Chef's T-Shirt

PR649 Chef's Coolchecker® T-Shirt ▪ Crew neck styling, Coolchecker® fabric back panel for wicking and breathability, Underarm vent holes, Double pen pocket on left sleeve ▪ 100% Polyester, 135gsm ▪ Sizes: **XS/30"** – **3XL/54"** ▪ 2 colours

40° Wash

Modern Fit

Brandable



White

Black



PR649



- Underarm vent holes



Chef's Accessories



PR653

PR653 Chef's Skull Cap

▪ Flat top, Elasticated fit,
One size fits all ▪ 65% Polyester,
35% Cotton, 195gsm. Denim: 60%
Cotton, 40% Polyester, 230gsm ▪
9 colours

- 85° Wash
- Cotton Rich†
- Brandable



PR648

PR648 Turn Up Chef's Hat ▪ Turn up double edge band, Five eyelets for ventilation, Four sizes available ▪ 65% Polyester, 35% Cotton, 195gsm ▪ Sizes: **S** 54cm, **M** 57cm, **L** 60cm, **XL** 63cm ▪ 2 colours

Brandable



PR658 Chef's Zandana ▪ Two ties at the back, Elasticated fit, Neck flap ▪ 65% Polyester, 35% Cotton, 195gsm ▪ 2 colours

Brandable



PR658

PR110 Striped Bib Apron ▪ Butcher's style apron, 90cm self-fabric ties and neck band, Width 72cm, length 101cm ▪ 100% Cotton, 240gsm. Black/Grey: 65% Polyester, 35% Cotton, 195gsm ▪ 3 colours

- 85° Wash
- 100% Cotton†
- Brandable



PR110



PR652

PR652 Chef's Jacket Studs ▪ Removable studs, For use with PR661 Cuisine Chef's Jacket (pg 149), Sold in bags of 12 ▪ Durable plastic, Wipe clean ▪ 3 colours



Chef's Trousers



PR554 Chef's 'Select' Slim Leg Trousers ■ Fitted style on lower leg, Patch pocket on right leg, Elasticated waist with draw cord and zip fly fastening ■ 65% Polyester, 35% Cotton, 195gsm ■ Sizes: **XS/28" – 2XL/44"** ■ 1 colour

85° Wash Brandable



OEKO TEX® STANDARD 100 11-55731 Shirley

PR552 Pull-On Chef's Trousers ■ Elasticated waist, Zip fly, 30.5"/77cm inside leg ■ 65% Polyester, 35% Cotton, 195gsm ■ Sizes: **XS/28" – 2XL/44"** ■ 2 colours

85° Wash Brandable



OEKO TEX® STANDARD 100 11-55731 Shirley

PR553 'Essential' Chef's Trousers ■ Elasticated waist, Swing pockets, 30.5"/77cm inside leg ■ 65% Polyester, 35% Cotton, 195gsm ■ Sizes: **XS/28" – 4XL/48"** ■ 2 colours

85° Wash Brandable



OEKO TEX® STANDARD 100 11-55731 Shirley

*only available in Black

PR555 'Essential' Chef's Cargo Pocket Trousers ■ Two mobile friendly cargo pockets, Elasticated waistband, Draw cord, 30.5"/77cm inside leg ■ 65% Polyester, 35% Cotton, 195gsm ■ Sizes: **XS/28" – 3XL/46"** ■ 1 colour

60° Wash Easy Care Brandable



■ Two cargo pockets

OEKO TEX® STANDARD 100 11-55731 Shirley

PR556 Chef's 'Artisan' Jogger Bottoms ■ Cuffed ankle, Elasticated waistband, draw cord and belt loops, Soft and stretchy fabric, 30.5"/77cm inside leg ■ 87% Cotton, 12% Polyester, 1% Elastane, 230gsm ■ Sizes: **XS/28" – 2XL/44"** ■ 2 colours

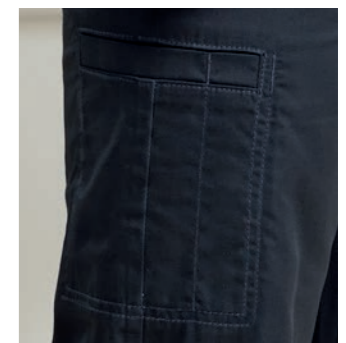
40° Wash Cotton Rich Brandable



OEKO TEX® STANDARD 100 11-55731 Shirley

PR557 Chef's Recycled Cargo Trousers ■ Made with recycled polyester, Tapered lower leg with optional turn-up hems, Elasticated waistband, drawcord and mock fly, 30.5"/77cm inside leg ■ 65% Recycled Polyester, 35% Cotton, 170gsm ■ Sizes: **5/32-34" – 3XL/44-46"** ■ 1 colour

60° Wash Brandable



■ Single cargo pocket

RECYCLED POLYESTER Global Recycled Standard

LOOK AND FEEL LIKE A PROFESSIONAL

Nowhere are looks more important than in the beauty industry. Which is why we've gone out of our way to create a range of elegant tunics that fit and flatter - whatever your shape. You'll love the little design details like zip fastenings, sparkly buttons, and flashes of bright colour. All designed into a classic range of tunics that are available in lots of colourful shades, you'll be spoilt for choice.



PR683

Blossom

PR683 Asymmetric Button Tunic

Flattering feminine fit with bust and back darts, Mandarin collar, Concealed zip through fastening and press stud ■ 100% Polyester, 185gsm ■
Sizes: **2XS/6** - **5XL/24** ■ 7 colours

40° Wash

Brandable





PR686



PR691



PR682

Orchid

PR682 Beauty & Spa Tunic

Flattering feminine fit with bust and back darts, Mandarin collar, Eight 'bar' button fastening

100% Polyester, 185gsm

Sizes: **2XS/6** – **5XL/24** ■ 8 colours

40° Wash Brandable



Styled with PR536 Women's Straight Leg Trousers. See page 62



Camellia

PR686 Feature Zip Tunic

Flattering feminine fit with bust and back darts, Cross over neckline, Pull-on style with front feature zip

100% Polyester, 185gsm

Sizes: **2XS/6** – **5XL/24** ■ 1 colour



Black & Black

40° Wash
Brandable

Ivy

PR691 Contrast Neck Tunic

Flattering feminine fit with bust and back darts, Crossover neckline with contrast coloured trim, Pull-on style with back zip fastening

100% Polyester, 185gsm

Sizes: **2XS/6** – **5XL/24** ■ 1 colour



Turquoise & Black

40° Wash
Brandable



Bib Apron

PR115 Waterproof Bib Apron ■ Adjustable buckle on neckband, Waterproof and bleach resistant, 90cm self fabric ties ■ 100% Polyester with Polyurethane coating, 110gsm ■ 8 colours

60° Wash Brandable



Mika

PR681 Feature Button Tunic ■ Flattering feminine fit with bust and back darts, Four sparkly feature buttons embellished on the trim, Pull-on style with back zip fastening ■ 100% Polyester, 185gsm ■ Sizes: **2XS/6 – 5XL/24** ■ 1 colour

40° Wash Brandable



Cornflower	Mushroom
Royal	Latte
Marine Blue	Khaki
Navy	Natural
Indigo Denim	Camel
Blue Denim	Mustard
Cyan	Sunflower
Light Blue	Yellow
Peacock	Lemon
Mid Blue	Lime
Sapphire	Oasis Green
Lilac	Olive
Lavender	Moss Green
Purple	Aqua
Rich Violet	Duck Egg Blue
Aubergine	Turquoise
Fuchsia	Teal
Magenta	Emerald
Pink	Kelly
Rose	Pistachio
Hot Pink	Apple
Raspberry Crush	Bottle
Burgundy	Sage
Red	*White
Salsa	Black Denim
Strawberry Red	Grey Denim
Orange	Silver
Terracotta	Steel
Chestnut	Charcoal
Brown	Dark Grey
Mocha	*Black



62 COLOURS

'Colours Collection'

PR150 'Colours Collection' Bib Apron ■ Adjustable buckle on neckband, 90cm self-fabric ties, Two sizes available ■ 65% Polyester, 35% Cotton, 195gsm. Denim: 70% Cotton, 30% Polyester, 265gsm ■ Size: 86cm x 72cm

*Extra large size: 102cm x 91cm (Black and White only)



85° Wash Brandable

PR116 Waterproof Salon Gown ▪ Suitable for salons and barbers, 145cm long by 123cm wide, Waterproof and bleach resistant, Adjustable tear release fastening at the back ▪ 100% Polyester with Polyurethane coating, 110gsm ▪ 2 colours



60° Wash Brandable



Healthcare Uniforms

PR605 'Daisy' Healthcare Tunic ▪ V-neck styling, Concealed zip fastening with press stud, Two curved front pockets, Contrast trim on neckline, sleeves and pockets ▪ 65% Polyester, 35% Cotton, 195gsm ▪ Sizes: **XS/8** – **5XL/24** ▪ 1 colour



85° Wash Brandable



Waterproof, bleach resistant salon gowns

PR117 Long Sleeve Waterproof Salon Gown ▪ Waterproof and bleach resistant for use in salons and barbers, Elasticated cuffs, Adjustable tear release fastening ▪ 100% Polyester with Polyurethane coating, 110gsm ▪ 1 colour



60° Wash
Brandable



PR604 'Vitality' Healthcare Tunic ▪ Soft collar styling, Concealed zip fastening and press stud, Two slanted front pockets, Contrast trim on neckline, sleeves and pockets ▪ 65% Polyester, 35% Cotton, 195gsm ▪ Sizes: **XS/8** – **5XL/24** ▪ 2 colours



85° Wash Brandable



SAY HELLO

TO A NEW GENERATION OF SCRUBS



The workplace is changing. Forget cold and clinical. Health and beauty is a dynamic, fluid and amazingly technical industry and we think the uniforms you wear should be too. So, we've put our heart and soul into creating the perfect range of uniforms designed for today's health and beauty professionals. And we know you're going to love the results.

Think activewear meets professional uniform. Technical fabrics engineered with super 4-way stretch. Tunics and pants designed for comfort and compliments. Breathable base layers that feel like a second skin. All in a range of team colours that are anything but dull, so you can make light work of the toughest days.

Because when you care for people 24/7, you need a uniform that takes care of you.

Models wear **NN200**, **NN300**, **NN500**, **NN600** and **NN610**



**PHYSIOTHERAPY • PHARMACY • CARE HOMES • DENTISTRY • VETERINARY • MEDICAL
BEAUTY SALON & SPA • COSMETICS • AESTHETICS • CHILDCARE • HOUSEKEEPING**

'Invincible' Women's Onna-Stretch Tunic

NN310 'Invincible' Women's Onna-Stretch Tunic ■ V-neck style with two front pockets, Breathable 4-way stretch for easy movement and all day comfort, Durable crease resistant and easycare, Modern fit with back darts and side vents ■ 42% Polyester, 33% Recycled Polyester, 19% Viscose, 6% Elastane, 210gsm ■ Sizes: XS - 3XL ■ 6 colours

40° Wash



NN310



4-WAY STRETCH



BREATHABLE



RECYCLED POLYESTER



EASY-CARE



BRANDABLE

onna
BY PREMIER

NN300



4-WAY STRETCH



BREATHABLE



RECYCLED POLYESTER



EASY-CARE



BRANDABLE



'Limitless' Women's Onna-Stretch Tunic

40° Wash



NN300 'Limitless' Women's Onna-Stretch Tunic ■ V-neck style with left chest pocket and combined pen pocket, Breathable 4-way stretch for easy movement and all day comfort, Durable crease resistant and easycare, Modern fit with back darts and side vents ■ 42% Polyester, 33% Recycled Polyester, 19% Viscose, 6% Elastane, 210gsm ■ Sizes: XS - 3XL ■ 6 colours



4-WAY STRETCH



BREATHABLE



RECYCLED POLYESTER



EASY-CARE



BRANDABLE

NN600

'Relentless' Women's Onna-Stretch Cargo Pants

NN600 'Relentless' Women's Onna-Stretch Cargo Pants ■ Breathable 4-way stretch for easy movement and all-day comfort, Durable, crease resistant and easycare, Part elasticated waistband with drawcord and mock fly, Multiple mobile friendly coin and zip pockets, Hem vents for easy movement, Leg length 29"/ 74cm ■ 42% Polyester, 33% Recycled Polyester, 19% Viscose, 6% Elastane, 210gsm ■ Sizes: XS - 3XL ■ 6 colours



Contains 33% RCS Certified Recycled Post Consumer Polyester Certified by Control Union CB-CUC-1119398

40° Wash

'Energized' Women's Onna-Stretch Jogger Pants

NN610 'Energized' Women's Onna-Stretch Jogger Pants ■ Breathable 4-way stretch for easy movement and all-day comfort, Durable, crease resistant and easycare, Elasticated waistband with drawcord and mock fly, Multiple mobile friendly coin and zip pockets, Ribbed knit cuffed ankles, Leg length 28.5"/ 72.5cm ■ 42% Polyester, 33% Recycled Polyester, 19% Viscose, 6% Elastane, 210gsm ■ Sizes: XS - 3XL ■ 6 colours



Contains 33% RCS Certified Recycled Post Consumer Polyester Certified by Control Union CB-CUC-1119398

40° Wash



4-WAY STRETCH



BREATHABLE



RECYCLED POLYESTER



EASY-CARE



BRANDABLE

NN610

'Relentless' Men's Onna-Stretch Cargo Pants

NN500 'Relentless' Men's Onna-Stretch Cargo Pants ■ Breathable 4-way stretch for easy movement and all day comfort, Durable crease resistant and easycare, Buttoned waistband, Drawcord and zip fly, Multiple mobile friendly coin and zip pockets, Hem vents for easy movement, Leg length 29.5"/ 75cm ■ 42% Polyester, 33% Recycled Polyester, 19% Viscose, 6% Elastane, 210gsm ■ Sizes: S - 3XL ■ 5 colours



40° Wash



4-WAY STRETCH



BREATHABLE



RECYCLED POLYESTER



EASY-CARE



BRANDABLE

NN500



4-WAY STRETCH



BREATHABLE



RECYCLED POLYESTER



EASY-CARE



BRANDABLE

onna
BY PREMIER



NN200

Dynamo Grey

Ceil Blue

Action Navy

Clean Green

Exact Black

'Limitless' Men's Onna-Stretch Tunic



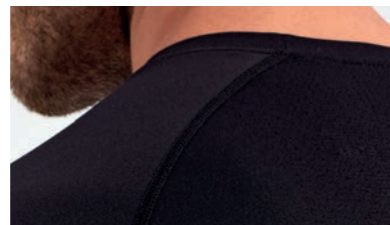
40° Wash

NN200 'Limitless' Men's Onna-Stretch Tunic ■ V-neck style with 3 in 1 chest pocket and combined pen pocket, Breathable 4-way stretch for easy movement and all day comfort, Durable crease resistant and easycare, Modern fit with back darts and side vents ■ 42% Polyester, 33% Recycled Polyester, 19% Viscose, 6% Elastane, 210gsm ■ Sizes: S - 3XL ■ 5 colours

'Unstoppable' Fresh Underscrub Base Layer

NN270 'Unstoppable' Men's Fresh Underscrub Base Layer ■ Peppermint extract gives a natural deodorising finish without a mint scent, Seamless body with unique jacquard pattern, Breathable 4-way stretch for easy movement and all day comfort, Durable crease resistant and easycare ■ 50% Recycled Nylon, 50% Nylon, 170gsm ■ Sizes: S - 2XL ■ 2 colours¹

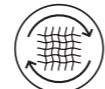
NN370 'Unstoppable' Women's Fresh Underscrub Base Layer ■ Peppermint extract gives a natural deodorising finish without a mint scent, Seamless body with unique jacquard pattern, Breathable 4-way stretch for easy movement and all day comfort, Durable crease resistant and easycare ■ 50% Recycled Nylon, 50% Nylon, 170gsm. *50% Recycled Nylon, 30% Nylon, 20% Polyester, 170gsm ■ Sizes: XS - XL ■ 4 colours



4-WAY STRETCH



BREATHABLE



RECYCLED
NYLON



DEODORISING
MINT FINISH



BRANDABLE



40° Wash



Sizing

Tailored Fit	Slim Fit
Modern Fit	Classic Fit



Women's - Shirts / Polos / Tees / Knitwear / Chef's Jackets / Beauty Tunics & Outerwear

Call size	2XS	XS	S	M	L	XL	2XL	3XL	4XL	5XL	6XL	7XL	8XL
Size	6	8	10	12	14	16	18	20	22	24	26	28	30
Bust to fit "	31	33	35	37	39	41	43	45	47	49	51	53	55
Bust to fit cm	79	84	89	94	99	104	109	114	119	124	129	134	139

Women's Waistcoats - PR621, PR623 & PR626

Call size	2XS	XS	S	M	L	XL	2XL
Size	6	8	10	12	14	16	18
Bust to fit "	27	29	32	34	37	40	44
Bust to fit cm	72	80	88	96	104	112	120

Women's Trousers, Chinos & Shorts - PR536, PR570 & PR572

Call size	XS	S	M	L	XL	2XL	3XL	4XL	5XL
Size	8	10	12	14	16	18	20	22	24
Waist to fit "	24	26	28	30	32	34	36	38	40
Waist to fit cm	59	64	69	74	79	84	89	94	99

Men's Collared Shirts - PR200, PR202, PR204, PR207, PR209, PR210, PR212, PR234 & PR236

Call size	S	S/M	M	M/L	L	L/XL	XL	XL/2XL	2XL	2XL/3XL	3XL	4XL	5XL	6XL
Collar "	14½	15	15½	16	16½	17	17½	18	18½	19	20	21	22	23
Collar cm	37	38	39½	41	42	43	44½	46	47	48	50	52	54	56
Chest to fit "	34	36	38	40	42	44	46	48	50	52	54	58	62	66
Chest to fit cm	87	92	96	102	107	111	117	122	127	132	137	147	157	167

Men's Soft Collared Shirts, Tees, Chef's Jackets, Knitwear & Artisan Fleece - PR218, PR219, PR220, PR221, PR222, PR238, PR244, PR246, PR247, PR250, PR252, PR254, PR258, PR649, PR803 & PR823

Call size	2XS	XS	S	M	L	XL	2XL	3XL	4XL	5XL
Chest to fit "	28	30	34	38	42	46	50	54	58	62
Chest to fit "	74	77	87	96	107	117	126	136	146	156

Men's Waistcoats - PR620, PR622 & PR625

Call size	2XS	XS	S	M	L	XL	2XL
Chest to fit "	30	32	36	40	44	46	52
Chest to fit cm	66	76	86	96	106	116	126

Studded Polo, Coolchecker Plus® Polo, Spun Dyed Polo, Essential Polos, Zip-Through Sweat, Softshells & Recyclights - PR612, PR630, PR631, PR995, PR997, PR808, PR810, PR811, PR814 & PR817.

Call size	XS	S	M	L	XL	2XL	3XL	4XL	5XL	6XL
Chest to fit "	33	35	38	41	44	47	50	53	56	59
Chest to fit cm	83	89	96	104	112	119	122	134	142	150

Men's Coolchecker Polo Shirts - PR615, PR617 & PR618

Call size	XS	S	M	L	XL	2XL	3XL	4XL	5XL
Chest to fit "	33	35	37	39	41	44	46	48	51
Chest to fit cm	83	89	94	99	104	112	116	122	130

Studded Polo Shirt - PR610

Call size	S	M	L	XL	2XL	3XL
Chest to fit "	34	38	42	46	50	52
Chest to fit cm	92	100	108	116	124	132

Men's Trousers, Chinos & Shorts - PR560, PR562 & PR564

Call size	XS	S	M	L	XL	2XL	3XL	4XL
Waist to fit "	30	32	34	36	38	40	42	44
Waist to fit cm	76	80	86	92	96	100	106	110

Unisex Chef's Trousers - PR552, PR553, PR554, PR555, PR556 & PR557

Call size	XS	S	M	L	XL	2XL	3XL	4XL
Waist to fit "	28-30	32-34	34-36	36-38	38-40	42-44	44-46	46-48
Waist to fit cm	71-76	81-86	86-91	91-96	96-101	106-111	111-116	116-126

Onna by Premier

Women's Tunics, Underscrub & Trousers

NN300, NN310, NN370, NN600, NN610

Call size	XS	S	M	L	XL	2XL	3XL
Chest to fit "	33-34	35-36	37-38	39-40	41-43	44-46	47-49
Chest to fit cm	84-86	89-91	94-96	99-101	104-109	112-117	121-124
Waist to fit "	25-26	27-28	29-31	32-34	35-37	38-40	41-43
Waist to fit cm	63-67	68-72	74-79	81-86	89-94	96-101	105-109

Men's Tunics, Underscrub & Trousers - NN200, NN270 & NN500

Call size	S	M	L	XL	2XL	3XL
Chest to fit "	37-39	40-42	43-44	45-47	48-49	50-53
Chest to fit cm	94-99	101-106	108-113	115-119	121-125	127-135
Waist to fit "	31-33	34-35	36-38	39-40	41-42	43-44
Waist to fit cm	79-84	86-89	91-96	99-101	104-107	110-114



Index

Shirts & Tees

PR200	Men's Long Sleeve Poplin Shirt	30
PR202	Men's Short Sleeve Poplin Shirt	30
PR204	Men's Long Sleeve Fitted Poplin Shirt	33
PR207	Men's Poplin Supreme Long Sleeve Shirt	36
PR209	Men's Poplin Supreme Short Sleeve Shirt	36
PR210	Men's Long Sleeve Security Shirt	38
PR212	Men's Short Sleeve Security Shirt	39
PR218	Men's Long-John Roll Sleeve Tee	81
PR219	Men's 'Comis' Cotton Rich Tee	82
PR220	Men's Long Sleeve Gingham Cotton Microcheck Shirt	47

PR221	Men's Short Sleeve Gingham Cotton Microcheck Shirt	47
PR222	Men's Jean Stitch Denim Shirt	86
PR234	Men's Long Sleeve Signature Oxford Shirt	42
PR236	Men's Short Sleeve Signature Oxford Shirt	43
PR238	Men's Cotton Rich Oxford Stripes Shirt	41
PR244	Men's Stretch Fit Cotton Poplin Long Sleeve Shirt	34
PR246	Men's Stretch Fit Cotton Poplin Short Sleeve Shirt	35
PR247	Men's Cotton Chambray Shirt - Fairtrade & Organic Cert.	85
PR250	'Mulligan' Check - Men's Long Sleeve Cotton Shirt	88
PR252	'Maxton' Check - Men's Long Sleeve Shirt	44
PR254	'Ginmill' Check - Men's Long Sleeve Cotton Shirt	89
PR258	Men's Banded Collar 'Grandad' Long Sleeve Shirt	32
PR300	Women's Long Sleeve Poplin Blouse	30
PR302	Women's Short Sleeve Poplin Blouse	30
PR305	Women's Poplin 3/4 Sleeve Blouse	33
PR307	Women's Poplin Supreme Long Sleeve Shirt	36
PR309	Women's Poplin Supreme Short Sleeve Shirt	36
PR310	Women's Long Sleeve Security Shirt	38
PR312	Women's Short Sleeve Security Shirt	39
PR318	Women's Long John Roll Sleeve Tee	81
PR319	Women's 'Comis' Cotton Rich Tee	82
PR320	Women's Long Sleeve Gingham Microcheck Shirt	47
PR321	Women's Short Sleeve Gingham Microcheck Shirt	47
PR322	Women's Jean Stitch Denim Shirt	86
PR334	Women's Long Sleeve Signature Oxford Blouse	42
PR336	Women's Short Sleeve Signature Oxford Blouse	43
PR338	Women's Cotton Rich Oxford Stripes Shirt	41
PR344	Women's Stretch-Fit Cotton Poplin Long Sleeve Shirt	34
PR346	Women's Stretch-Fit Cotton Poplin Short Sleeve Shirt	35
PR347	Women's Cotton Chambray Shirt - Fairtrade & Organic Cert.	85
PR350	'Mulligan' Check-Women's Long Sleeve Cotton Shirt	88
PR352	'Maxton' Check - Women's Long Sleeve Shirt	44
PR354	'Ginmill' Check-Women's Long Sleeve Cotton Shirt	89
PR358	Women's Banded Collar 'Grandad' Shirt	32

Outerwear

PR803	Men's 'Artisan' Fleece Gilet	23
PR804	Women's 'Artisan' Fleece Gilet	23
PR808	Men's Spun Dyed Recycled Zip-Through Sweat	15
PR809	Women's Spun Dyed Recycled Zip-Through Sweat	15
PR810	Men's Windchecker® Printable & Recycled Softshell Jacket	12
PR811	Men's 'Recyclight' Padded Gilet	19
PR812	Women's Windchecker® Printable & Recycled Softshell Jacket	12
PR814	Men's Windchecker® Printable & Recycled Gilet	12
PR815	Women's 'Recyclight' Padded Gilet	19
PR816	Women's Windchecker® Printable & Recycled Gilet	12
PR817	Men's 'Recyclight' Padded Jacket	16
PR819	Women's 'Recyclight' Padded Jacket	16
PR823	Men's 'Artisan' Fleece Jacket	20
PR824	Women's 'Artisan' Fleece Jacket	20
PR830	Men's 'Recyclight' Full Zip Micro Fleece	24
PR831	Unisex 'Recyclight' ¼ Zip Micro Fleece	27
PR832	Women's 'Recyclight' Full Zip Micro Fleece	24

Waistcoats

PR620	Men's Hospitality Waistcoat	90
PR621	Women's Hospitality Waistcoat	90
PR622	Men's Lined Polyester Waistcoat	91
PR623	Women's Lined Polyester Waistcoat	91
PR625	Men's Herringbone Waistcoat	90
PR626	Women's Herringbone Waistcoat	90

Ties & Scarves

PR700	Plain Work Tie	39
PR705	Bow Tie	52
PR710	Clip-on Work Tie	39
PR715	Epaulettes	39
PR730	'Colours Originals' Plain Business Scarf	41
PR740	'Colours Collection' Plain Chiffon Scarf	48
PR750	'Colours Collection' Satin Tie	49
PR755	'Colours Collection' Satin Clip-on Tie	48
PR765	'Colours Originals' Fashion Tie	41
PR780	Micro Waffle Tie	51
PR781	Micro Dot Tie	51

PR782	Double Stripe Tie	52
PR783	Waffle Stripe Tie	51
PR784	Sports Stripe Tie	52
PR785	'Colours Originals' Fashion Clip-on Tie	51
PR787	Puppy Tooth Tie	51
PR789	Slim Knitted Tie	52
PR793	Slim Tie	52

Trousers, Chino Jeans & Shorts

PR536	Women's Straight Leg Trousers	62
PR560	Men's Performance Chino Jeans	60
PR562	Men's Performance Chino Shorts	64
PR564	Men's Workwear Cargo Shorts	63
PR570	Women's Performance Chino Jeans	60
PR572	Women's Performance Chino Shorts	64
PR701	Clip-on Trousers Braces	62

Knitwear

PR400	'Essential' Acrylic Men's V-Neck Sweater	59
PR402	'Essential' Acrylic Women's Cardigan	59
PR692	Men's Crew Neck Cotton Rich Knitted Sweater	57
PR694	Men's Knitted V-Neck Sweater	55
PR695	Men's Quarter-Zip Knitted Sweater	56
PR696	Women's Knitted V-Neck Sweater	56
PR697	Women's Button-Through Knitted Cardigan	55
PR698	Women's Long Length Knitted Cardigan	56
PR699	Men's V-Neck Sleeveless Sweater	56

Polo Shirts

PR610	Studded Polo Shirt	78
PR612	Coolchecker® Studded Polo Shirt	77
PR615	Men's Coolchecker® Pique Polo Shirt	70
PR616	Women's Coolchecker® Pique Polo Shirt	70
PR617	Men's Long Sleeve Coolchecker® Pique Polo Shirt	76
PR618	Men's Contrast Tipped Coolchecker® Polo Shirt	73
PR619	Women's Contrast Tipped Coolchecker® Polo	73
PR630	Men's Coolchecker® Plus Pique Polo	69
PR631	Men's Spun Dyed Recycled Polo Shirt	74
PR632	Women's Coolchecker® Plus Pique Polo	69
PR633	Women's Spun Dyed Recycled Polo Shirt	74
PR995	'Essential' Unisex Short Sleeve Polo Shirt	79
PR997	'Essential' Unisex Long Sleeve Polo Shirt	79

Aprons

PR102	100% Cotton Bib Apron	119
PR105	Zip Pocket Waist Apron	104
PR110	Striped Bib Apron	150
PR112	Cotton Bib Apron - Fairtrade Cert.	122
PR113	Cotton Denim Bib Apron - Organic & Fairtrade Cert.	116
PR114	Mid Length Cotton Apron - Fairtrade Cert.	122
PR115	Waterproof Bib Apron	130
PR119	Cross Back Interchangeable Apron Straps	128
PR120	Recycled Polyester & Cotton Bib Apron - Organic & Fairtrade Cert.	123
PR121	'Barley' Contrast Stitch Bib Apron	124
PR122	'Regenerate' Bib Apron	117
PR123	'Espresso' Bib Apron	129
PR125	Jean Stitch Denim Waist Apron	110
PR126	Jean Stitch Denim Bib Apron	110
PR127	'Domain' Contrast Denim Bib Apron	113
PR128	'Domain' Contrast Denim Waist Apron	113
PR129	Cross Back 'Barista' Bib Apron	128
PR130	'Calibre' Heavy Cotton Canvas Bib Apron	126
PR131	'Calibre' Heavy Cotton Canvas Waist Apron	126
PR132	'Chino' Bib Apron	118
PR134	'District' Waxed Look Denim Bib Apron	115
PR135	'Division' Waxed Look Denim Waist Apron	115
PR136	'Division' Waxed Look Denim Bib Apron with Faux leather	115
PR137	'Calibre' Heavy Cotton Canvas Pocket Apron	126
PR138	'Metro' Utility Hip Apron	118
PR141	'Colours Collection' Mid-Length Apron with Pocket	105
PR144	'Annex' Oxford Bib Apron	125
PR145	Children's Waterproof Apron	130

PR149	Children's Bib Apron	100
PR150	'Colours Collection' Bib Apron	96
PR151	'Colours Collection' Mid Length Apron	99
PR154	'Colours Collection' Bib Apron with Pocket	99
PR155	'Colours Collection' Three Pocket Apron	101
PR158	'Colours Collection' Bar Apron with Pocket	101
PR159	'Colours Collection' 2 in 1 Apron	100
PR162	'Colours Collection' Contrast Bib Apron	104
PR165	'Essential' Bib Apron	106
PR167	Polyester Bib Apron	107
PR181	'Artisan's Choice' Double Pocket Canvas Apron	120
PR190	'Swap & Pop' Customisable Apron Body	103
PR191	'Swap & Pop' Customisable Apron Strap	103
PR996	Antimicrobial Bib Apron	107

Tabards

PR171	Pocket Tabard	133
PR172	Long Length Pocket Tabard	132
PR174	Waterproof Wrap Around Tunic	131
PR177	'Tulip' Wrap Around Tunic	131

Chefswear

PR552	Chef's Pull-on Trousers	152
PR553	'Essential' Chef's Trousers	152
PR554	Chef's Slim Fit Trousers	152
PR555	'Essential' Chef's Cargo Pocket Trousers	153
PR556	Artisan Chef's Jogging Trousers	153
PR557	Chef's Recycled Cargo Trousers	153
PR648	Turn-up Chef's Hat	151
PR649	Coolchecker® Chef's T-shirt	149
PR652	Chef's Jacket Studs	151
PR653	Chef's Skull Cap	150
PR656	Short Sleeve Chef's Jacket	145
PR657	Long Sleeve Chef's Jacket	145
PR658	Chef's Zandana	151
PR660	Chef's Denim Jacket	141
PR661	Chef's Long Sleeve 'Cuisine' Jacket	149
PR664	Chef's Short Sleeve Stud Jacket	141
PR665	Chef's Long Sleeve Stud Jacket	141
PR670	Women's Short Sleeve Chef's Jacket	148
PR671	Women's Long Sleeve Chef's Jacket	148
PR900	'Essential' Short Sleeve Chef's Jacket	142
PR901	'Essential' Long Sleeve Chef's Jacket	142
PR902	Chef's Short Sleeve Coolchecker® Jacket	146
PR903	Chef's Long Sleeve Coolchecker® Jacket	146
PR904	Chef's Recycled Short Sleeve Shirt	136
PR906	Chef's Zip-Close Short Sleeve Jacket	139

Beauty, Salonwear & Healthcare

PR115	Waterproof Bib Apron	158
PR116	Waterproof Salon Gown	160
PR117	Long Sleeve Waterproof Gown	160
PR536	Women's Straight Leg Trousers	62
PR604	'Vitality' Healthcare Tunic	161
PR605	'Daisy' Healthcare Tunic	161
PR681	'Mika' Beauty and Spa Tunic	158
PR682	'Orchid' Beauty and Spa Tunic	157
PR683	'Blossom' Beauty and Spa Tunic	155
PR686	'Camellia' Beauty and Spa Tunic	156
PR691	'Ivy' Beauty and Spa Tunic	156

Onna by Premier

NN200	Men's 'Limitless' Onna-Stretch Tunic	169
NN270	Men's 'Unstoppable' Fresh Underscrub Base Layer	170
NN300	Women's 'Limitless' Onna-Stretch Tunic	165
NN310	Women's 'Invincible' Onna-Stretch Tunic	164
NN370	Women's 'Unstoppable' Fresh Underscrub Base Layer	170
NN500	Men's 'Relentless' Onna-Stretch Cargo Pants	168
NN600	Women's 'Relentless' Onna-Stretch Cargo Pants	166
NN610	Women's 'Energized' Onna-Stretch Jogger Pants	167



PR904

PR557



BUSINESSWEAR
HOSPITALITYWEAR
OUTERWEAR
CHEFSWEAR
BEAUTY & SALON
ACTIVE CARE WEAR

