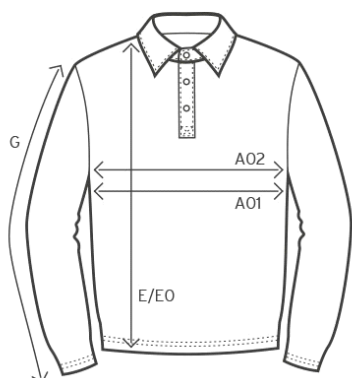


2049

Men's Polo Sweater



measurement table (cm)

	S	M	L	XL	XXL	XXXL
A01	53	56	59	62	65	68
E	71	73	75	77	79	81
G	68	69	70	71	72	73

A01 1/2 CHEST

E BODY LENGTH

G SLEEVE LENGTH

colours



00/white

11-0601 TPX/TCX



9D/black

19-4205 TPX/TCX



XG/ash

13-4105 TPX/TCX



03/sports grey

17-0000 TPX/TCX



36/fire red

19-1663 TPX/TCX



VB/royal

19-4056 TPX/TCX



54/navy

19-4025 TPX/TCX



product

2049

Men's Polo Sweater

material

100 % cotton

weight

320 g/m²

sizes

S-XXXL

care instructions



packaging units

Unit = 1 piece.

Carton = 20 pieces.

Sizes and weights + /- 5%. Subject to amendment.



2049

Men's Polo Sweater

product description

Sweatshirt, polo-neck, button panel with 3 tone-in-tone buttons, elastane sleeve cuffs and waistband, molton brushed, 100 % cotton, 320 g/m², S-XXXL.

short description

Classic molton polo sweatshirt with button panel and 3 tone-in-tone buttons, molton brushed inside, sleeve cuffs and waistband with elastane, produced of combed cotton. The sweatshirt has a modern cut.

properties

- outstanding washing results at 60° C as well as suitable for tumble drying
- excellent thermophysiological properties due to brushed 3 thread molton

Sizes and weights + /- 5%. Subject to amendment.



 promodoro®