

KARIBAN

REFERENCE : K970

NAME :

SIZES : S_M_L_XL_XXL_3XL_4XL

COMPOSITION :

Main fabric : Jersey knit Cotton/Acrylic 50/50 - 290
50%cotton/50%acrylic

COLORS	PANTONE SERIGRAPHIE
Black	Black
Grey melange	Cool gray 7C
Navy	2965C

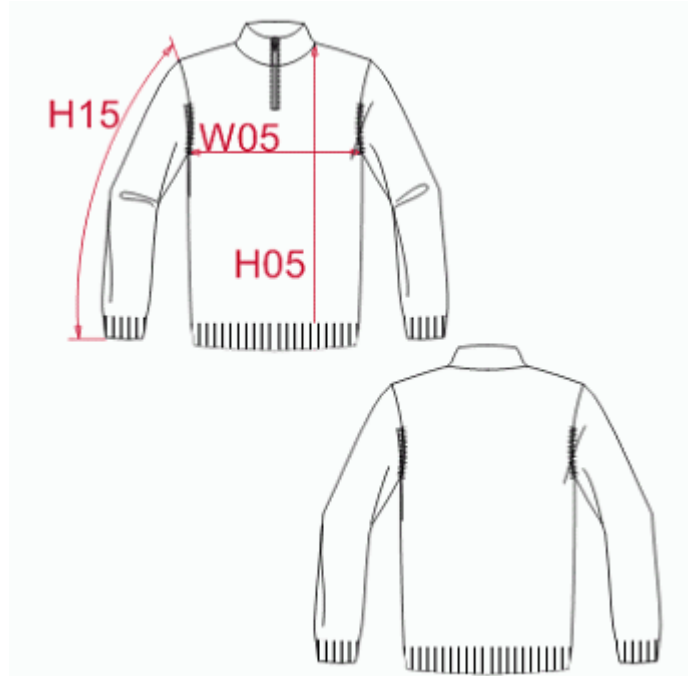
WEIGHT :

Main fabric : ± 290 gsm

FABRIC CONSTRUCTION AND FINISHING :

Gauge 12gg

DESCRIPTION	
Français :	Pull homme ¼ zip
English :	Men's ¼ zip jumper
Nederlands :	Heren pullover met ritskraag
Deutsch :	Herren pullover ¼ reissverschluss
Español :	Jersey con cremallera ¼
Italiano :	Maglia uomo mezza zip
Português :	Camisola de malha meio fecho



MEASUREMENT							
Description	S	M	L	XL	2XL	3XL	4XL
H05 Hauteur totale / Total height	67,50	69,50	71,50	73,50	75,50	77,50	79,50
W05 1/2 largeur poitrine / 1/2 chest width	49	52	55	58	61	64	67
H15 Longueur manche / Sleeve length	63	65	67	69	71	73	75

PACKING	
Box	10 pcs / box S-L => L:59cm W:39cm H:14cm GW:5.20kg NW:3.70kg XL-XXL => L:66cm W:41cm H:14cm GW:6.20kg NW:4.50kg 3XL-4XL => L:70cm W:43cm H:14cm GW:6.70kg NW:5.00kg

CARE LABEL				