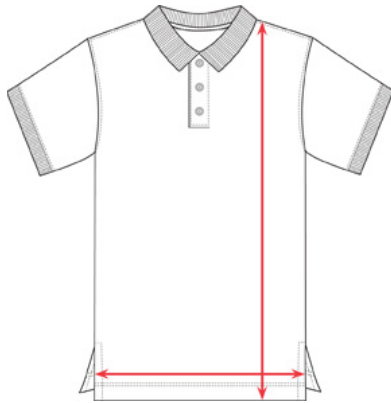




## PRODUCT SPECS



6002 - Adult Ring Spun Piqué Polo

Anvil. The Right Fit.

Size	Width	Length
S	19"	29"
M	21"	30"
L	23"	31"
XL	25"	32"
2XL	27"	33"
3XL	29"	34"
4XL	31"	35"
5XL	33"	36"

## SIZE CHART

	XXS	XS	S	M	L	XL	2XL	3XL	4XL	5XL
Men's T-Shirt (Chest)	--	32"	36"	40"	44"	48"	52"	56"	60"	64"
Men's Polo (Chest)	--	--	36-38"	40-42"	44-46"	48-50"	52-54"	56-58"	60-62"	64-66"
Men's (Waist)	--	--	28-30	32-34	36-38	40-42	44-46	--	--	--
Women's (Size)	--	0-2	4-6	8-10	12-14	16-18	20-22	24-26	--	--
Women's Relaxed Fit (Chest)	--	--	36"	40"	44"	48"	52"	56"	--	--
Women's Classic Fit (Chest)*	--	31"	34"	36-38"	40-42"	44-46"	46-48"	--	--	--
Women's Fitted (Chest)*	--	--	30"	33"	36"	39"	42"	--	--	--
Women's (Waist Size)*	--	0-2	4-6	8-10	12-14	16-18	--	--	--	--
Youth (Size)/(Chest)	2T-4T / 24-28"	2-4 / 26-32"	6-8 / 30-34"	10-12 / 34-36"	14-16 / 36-38"	18-20 / 38-40"	--	--	--	--
* Chest measurements do not represent 2x1 and 1x1 rib styles, measurements vary due to nature of stretch fabrics.										

© 2008-2013 ANVIL KNITWEAR, INC. ALL RIGHTS RESERVED.